

Revised
Manual
of Suggested
Battalion Drill
for the
Army of Tennessee
Formerly known
as the
First Confederate Division
of the
North South Alliance

2d Edition

Major General Mike Moore,
Commanding

Manual Prepared and Compiled
by
Major Silas Tackitt,
Assistant Inspector General, AoT

This booklet of battalion manœuvres is not intended as an exclusive or exhaustive list of battalion drill. Found herein are the manœuvres most likely to be used by the Army of Tennessee and other national entities. Member units are encouraged to explore the schools of the battalion and brigade from the various period manuals for overlooked gems waiting to be rediscovered by reenactors.

Hardee's Revised and Improved Tactics (Goetzel, 1863) is the primary manual for the Army of Tennessee. Paragraph numbering in the body of this pamphlet is from Hardee's School of the Battalion which mirrors the 1861 U.S. Tactics. Corresponding paragraph numbers for the School of the Battalion in Casey, Gilham and in Dom Dal Bello's P.I.E (4th Ed., 1998) are included in the topic heading for each manœuvre detailed herein.

Occasionally, text has been edited to make singular items from the school of the soldier into plural items applicable to the school of the battalion. Sometimes text from one paragraph of the SoB has been inserted into another for purposes of clarity. Where paragraphs jump from the SoB to the SoC and back, or from one paragraph of the SoB to another, paragraph numbers have been retrained or inserted so the reader can track the changes from the original.

"...the battalion is not a Chinese puzzle, the parts which can only compose the whole in one single way ; but that it is more like an algebraic compound quantity. He who understands its nature can unite the parts in a variety of ways, among which he promptly chooses the one which is the most easy under the circumstances."

Col. Wm Steffen, *Digest of the United States Tactics for the Use of Officers*, (1862) pp. 42-43.

First Edition Copyright, 2005, and Second Edition, 2008, by
Mark B. Tackitt of Seattle, WA

All rights reserved. Liberal and extensive distribution of this FREE pamphlet is encouraged. However, re-assimilating, rearranging, cutting, pasting, reorganizing and/or otherwise taking credit for any part of this work without the written permission of the author is prohibited. Hey, I put some serious time into this pamphlet!

<http://www.zipcon.net/~silas/guidesposts/>
Search engine terms : **Guides Posts**

THE FIRINGS

H 31-67 / C 39-56 / G 299 / D 176-183 / see illustration, p. 44.

Loading at will, and the Firings.

31. The colonel will next cause to be executed loading at will, by the commands prescribed in school of the company, No. 45 ; the officers and sergeants in the ranks will half face to the right with the men at the eighth time of loading, and will face to the front when the men next to them come to a shoulder.

32. The colonel will cause to be executed the *fire by company*, the *fire by wing*, the *fire by battalion*, the *fire by file*, and the *fire by rank*, by the commands to be herein indicated.

33. The *fire by company* and the *fire by file* will always be *direct* ; the *fire by battalion*, the *fire by wing*, and the *fire by rank*, may be either *direct* or *oblique*.

34. When the fire ought to be *oblique*, the colonel will give, at every round, the caution, *right* (or *left*) *oblique*, between the commands, *ready* and *aim*.

35. The fire by company will be executed alternately by the right and left companies of each division, as if the division were alone. The right company will fire first ; the captain of the left will not give his first command till he shall see one or two pieces at a ready in the right company ; the captain of the latter, after the first discharge, will observe the same rule in respect to the left company ; and the fire will thus be continue alternately.

36. The colonel will observe the same rule in the firing by wing.

37. The fire by file will commence in all the companies at once, and will be executed as has been prescribed in the school of the company, No. 55 and following. The fire by rank will be executed by each rank alternately, as has been prescribed in the school of the company, No. 58 and following.

38. The color-guard will not fire, but reserve itself for the defense of the color.

The fire by company.

39. The colonel, wishing the fire by company to be executed, will command :

1. *Fire by company*. 2. *Commence firing*.

40. At the first command, the captains and covering sergeants will take the positions indicated in the school of the company, No. 49.

41. The color and its guard will step back at the same time, so as to bring the front rank of the guard in a line with the rear rank of the battalion. *This rule is general for all the different firings*.

42. At the second command, the odd numbered companies will commence to fire ; their captains will each give the commands prescribed in the school of the company, No. 50, observing to precede the command, *company*, by

that of *first*, *third*, *fifth*, or *seventh*, according to the number of each.

43. The captains of the even numbered companies will give, in their turn, the same commands, observing to precede them by the number of their respective companies.

44. In order that the odd numbered companies may not all fire at once, their captains will observe, but only for the first discharge, to give the command, *fire*, one after another ; thus, the captain of the third company will not give the command, *fire*, until he has heard the fire of the first company ; the captain of the fifth will observe the same rule with respect to the third, and the captain of the seventh the same rule with respect to the fifth.

45. The colonel will cause the fire to cease by the sound to *cease firing*; at this sound, the men will execute what is prescribed in the school of the company, No. 63 ; at the sound, for officers to take their places after firing, the captains, covering sergeants, and color-guard, will promptly resume their places in line of battle. *This rule is general for all the firings*.

The fire by wing.

46. When the colonel shall wish this fire to be executed, he will command:

1. *Fire by wing*. 2. *Right wing*. 3. READY. 4. *Aim*. 5. FIRE. 6. LOAD.

47. The colonel will cause the wings to fire alternately, and he will recommence the fire by the commands,

1. *Right wing* ; 2. *Aim* ; 3. FIRE ; 4. LOAD.

1. *Left wing* ; 2. *Aim* ; 3. FIRE ; 4. LOAD.

in conforming to what is prescribed, No. 35.

The fire by battalion.

48. The colonel will cause this fire to be executed by the commands last prescribed, substituting for the first two,

1. *Fire by battalion* ; 2. *Battalion*.

The fire by file.

49. To cause this to be executed, the colonel will command :

1. *Fire by file*. 2. *Battalion*. 3. READY. 4. *Commence firing*.

50. At the fourth command, the fire will commence on the right of each company, as prescribed in the school of the company, No. 57. The colonel may, if he thinks proper, cause the fire to commence on the right of each platoon.

The fire by rank.

51. To cause this fire to be executed, the colonel will command :

1. *Fire by rank*. 2. *Battalion*. 3. READY.

4. *Rear rank.* 5. AIM. 6. FIRE. 7. LOAD.

52. This fire will be executed as has been explained in the school of the company, No. 59, in following the progression prescribed for the two ranks which should fire alternately.

The fire by the rear rank.

53. When the colonel shall wish the battalion to fire to the rear, he will command :

1. *Face by the rear rank.* 2. *Battalion.* 3. *About - FACE*

54. At the first command, the captains, covering sergeants, and file closers will execute what has been prescribed in the school of the company, No. 69 ; the color-bearer will pass into the rear rank, and for this purpose, the corporal of his file will step before the corporal next on his right to let the color-bearer pass, and will then take his place in the front rank ; the lieutenant colonel, adjutant, major, sergeant major, and the music will place themselves before the front rank, and face to the rear, each opposite his place in the line of battle, the first two passing around the right, and the others around the left of the battalion.

55. At the third command, the battalion will face about ; the captains and covering sergeants observing what is prescribed in the school of the company, No. 70.

56. The battalion facing thus by the rear rank, the colonel will cause it to execute the different fires by the same commands as if it were faced by the front rank.

57. The right and left wings will retain the same designations, although faced *about* ; the companies also will preserve their former designations, as *first, second, third, &c.*

58. The fire by file will commence on the left of each company, now become the right.

59. The fire by rank will commence by the front rank, now become the rear rank. This rank will preserve its denomination.

60. The captains, covering sergeants, and color-guard will, at the first command given by the colonel, take the places prescribed for them in the fires, with the front rank leading.

61. The colonel, after firing to the rear, wishing to face the battalion to its proper front, will command :

1. *Face by the front rank.* 2. *Battalion.* 3. *About - FACE.*

62. At these commands, the battalion will return to its proper front by the means prescribed, Nos. 54 and 55.

63. The fire by file being that most used in war, the colonel will give it the preference in the preparatory exercises, in order that the battalion may be brought to execute it with the greatest possible regularity.

64. When the colonel may wish to give some relaxation to the battalion, without breaking the ranks, he will execute what has been prescribed in the school of the company, Nos. 37 and 38 or Nos. 39 and 40.

65. When the colonel shall wish to cause arms to be stacked, he will bring the battalion to ordered arms, and then command :

1. *Stack - ARMS.* 2. *Break ranks.* 3. MARCH.

66. The colonel wishing the men to return to the ranks, will cause *attention* to be sounded, at which the battalion will re-form behind the stacks of arms. The sound being finished, the colonel after causing the stacks to be broken, will command,

Battalion.

67. At this command, the men will fix their attention, and remain immovable.

ASSEMBLY AND PARADE

Assembly of the Regiment or Battalion

G 297, 737 / D 184-186

C.S Regulations 324. There shall be daily one dress parade, at Troop or Retreat, as the commanding officer may direct.

325. A signal will be beat or sounded half an hour before troop or retreat, for the music to assemble on the regimental parade, and each company to turn out under arms on its own parade, for roll-call and inspection by its own officers.

326. Ten minutes after that signal, the Adjutant's call will be given, when the Captains will march their companies (the band playing) to the regimental parade, where they take their positions in the order of battle.

Gilham 297. At the signal, called the adjutant's call, the companies are marched from the company parades by their captains, the music playing. The color company serves as the basis of the formation, and is the first to form ; the color-guard being at the point where the centre of the line is to rest, one marker is placed in front of it, his elbow touching the right corporal of the color guard, and another on the line at a little less than company distance from him, on his right, and facing towards him ; the color company is halted three paces behind this line, faced to the front, and dressed up upon the line by the captain, who aligns it to the left.

The company on the left of the color is the next to take its post ; it is halted three paces behind the line, its right nearly behind the left file of the color guard, and faced to the front ; as soon as it halts the left guide of the company throws himself out, so as to be opposite one of the three left files of the company, faces to the right, and aligns himself upon the two markers ; the captain then places himself on the left of the color guard, on a line with its front rank, and aligns the company to the right. The company on the right of the colors forms next upon the same principles ; the right guide posts himself upon the line opposite one of the three right files of the company, and faces to the left ; the captain places himself on the right of the color company, and aligns his company to the left.

[C.S Regulations 326.] The remaining companies take their posts on the

left and right in succession, and when the formation is complete, the adjutant commands,

Guides - POSTS ;

at this command, the guides on the line retire to their places by passing through the intervals between the companies, and those captains who are on the left of their companies, shift to the right.

Dress Parade

G 738 / D 10, 22 / CS Regulations 326

[C.S. Regulations 326.] When the line is formed, the Captain of the first company, on notice from the Adjutant, steps one pace to the front, and gives to his company the command,

"Order - ARMS! Parade - REST!"

which is repeated by each Captain in succession to the left. The Adjutant takes post two paces on the right of the line ; the Sergeant-major two paces on the left. The music will be formed in two ranks on the right of the Adjutant. The senior officer present will take the command of the parade, and will take post at a suitable distance in front, opposite the centre, facing the line.

327. When the companies have ordered arms, the Adjutant will order the music to beat off, when it will commence on the right, beat in front of the line to the left, and back to its place on the right.

328. When the music has ceased, the Adjutant will step two paces to the front, face to the left, and command,

1. Attention! 2. Battalion. 3. Shoulder - ARMS!

4. Prepare to open ranks! 5. To the rear, open order! 6. MARCH!

At the sixth command, the ranks will be opened according to the system laid down in the Infantry Tactics, the commissioned officers marching to the front, the company officers four paces, field officers six paces, opposite to their positions in the order of battle, where they will halt and dress. The Adjutant, seeing the ranks aligned, will command,

FRONT!

and march along the front to the centre, face to the right, and pass the line of company officers eight or ten paces, where he will come to the right-about, and command,

Present - ARMS!

when arms will be presented, officers saluting.

329. Seeing this executed, he will face about to the commanding officer, salute, and report,

"Sir, the parade is formed."

The Adjutant will then, on intimation to that effect, take his station three paces on the left of the commanding officer, one pace retired, passing round his rear.

330. The commanding officer, having acknowledged the salute of the line by touching his hat, will, after the Adjutant has taken his post draw his sword, and

command,

1. Battalion. 2. Shoulder - ARMS!

and add such exercises as he may think proper, concluding with

Order - ARMS!

then return his sword, and direct the Adjutant to receive the reports.

331. The Adjutant will now pass round the right of the commanding officer, advance upon the line, halt midway between him and the line of company officers, and command,

1. First Sergeants, to the front and centre. 2. MARCH!

At the first command, they will shoulder arms as Sergeants, march two paces to the front, and face inward. At the second command, they will march to the centre, and halt. The Adjutant will then order,

1. Front - FACE. 2. Report.

At the last word, each in succession, beginning on the right, will salute by bringing the left hand smartly across the breast to the right shoulder, and report the result of the roll-call previously made on the company parade.

332. The Adjutant again commands,

1. First Sergeants, outward - FACE! 2. To your posts - MARCH!

when they will resume their places, and order arms. The Adjutant will now face to the commanding officer, salute, report absent officers, and give the result of the First Sergeants' reports. The commanding officer will next direct the orders to be read, when the Adjutant will face about and announce,

Attention to Orders.

He will then read the orders.

333. The orders having been read, the Adjutant will face to the commanding officer, salute, and report ; when, on an intimation from the commander, he will face again to the line, and announce,

Parade is dismissed.

All the officers will now return their swords, face inward, and close on the Adjutant, he having taken position in their line, the field officers on the flanks. The Adjutant commands,

1. Front - FACE! 2. Forward - MARCH!

when they will march forward, dressing on the centre, the music playing, and when within six paces of the commander, the Adjutant will give the word,

Halt!

The officers will then salute the commanding officer by raising the hand to the cap, and there remain until he shall have communicated to them such instructions as he may have to give, or intimates that the ceremony is finished. As the officers disperse, the First Sergeants will close the ranks of their respective companies, and march them to the company parades, where they will be dismissed, the band continuing to play until the companies clear the regimental parade.

334. All field and company officers and men will be present at dress parades, unless especially excused, or on some duty incompatible with such attendance.

335. A dress parade once a day will not be dispensed with, except on

extraordinary and urgent occasions.

LINE INTO COLUMN

To Break to the Right or the Left into Column.

H 68 / C 77 / G 300 / D 42 & D 24 / illustration p. 45

68. Lines of battle will habitually break into column by company ; they may also break by division or by platoon.

69. It is here supposed that the colonel wishes to break by company to the right ; he will command :

1. *By company, right wheel.* 2. MARCH (or *double quick - MARCH*).

70. At the first command, each captain will place himself rapidly before the centre of his company, and caution it that it has to wheel to the right ; each covering sergeant will replace his captain in the front rank.

71. At the command, *march*, each company will break to the right, according to the principles prescribed in the school of the company, No. 173 ; each captain will conform himself to what is prescribed for the chiefs of platoon ; the left guide, as soon as he can pass, will place himself on the left of the front rank to conduct the marching flank, and when he shall have approached near to the perpendicular, the captain will command :

1. *Such company.* 2. HALT.

72. At the second command, which will be given at the instant the left guide shall be at the distance of three paces from the perpendicular, the company will halt ; the guide will advance and place his left arm lightly against the breast of the captain, who will establish him on the alignment of the man who has faced to the right ; the covering sergeant will place himself correctly on the alignment on the right of that man ; which being executed, the captain will align his company by the left, command,

FRONT,

and place himself two paces before its centre.

73. The captains having commanded,

FRONT,

the guides, although some of them may not be in the direction of the preceding guides, will stand fast, in order that the error of a company that has wheeled too much or too little may not be propagated ; the guides not in the direction will readily come into it when the column is put in march.

74. A battalion in line of battle will break into column by company to the left, according to the same principles ; and by inverse means ; the covering sergeant of each company will conduct the marching flank, and the left guide will place himself on the left of the front rank at the moment the company halts.

78. The battalion being in column, the lieutenant colonel and major will place themselves on the directing flank, the first abreast with the leading

subdivision and the other abreast with the last, and both six paces from the flank. The adjutant will be near the lieutenant colonel, and the sergeant major near the major.

79. The colonel will have no fixed place as the instructor of his battalion ; but in columns composed of many battalions, he will place himself habitually on the directing flank fifteen or twenty paces from the guides, and abreast with the centre of his battalion.

80. When the colonel shall wish to move the column forward without halting it, he will caution the battalion to that effect, and command :

1. *By company, right wheel.* 2. MARCH (or *double quick - MARCH*).

81. At the first command, the captains of companies will execute what is prescribed for breaking column from a halt.

82. At the second command, they will remain in front of their companies to superintend the movement ; the companies will wheel to the right on fixed pivots as indicated in the school of the company, No. 185 ; the left guides will conform to what is prescribed above ; when they shall arrive near the perpendicular, the colonel will command :

3. *Forward.* 4. MARCH. 5. *Guide left.*

83. At the third command, each covering sergeant will place himself by the right side of the man on the right of the front rank of his company. At the fourth command, which will be given at the instant the wheel is completed, the companies will cease to wheel and march straight forward. At the fifth, the men will take the touch of elbows to the left, the leading guide will march in the direction indicated to him by the lieutenant colonel. The guides will immediately conform themselves to the principles of the march in column, school of the company, No. 200 and following.

84. If the battalion be marching in line of battle, the colonel will cause it to wheel to the right or left, by the same commands and the same means ; but he should previously caution the battalion that it is to continue the march.

85. A battalion in line of battle will break into column by company to the left, according to the same principles and by inverse means ; the covering sergeant of each company will conduct the marching flank, and the left guides will place themselves on the left of their respective companies at the command, *forward*.

Break to the Right to March to the Left

H 86 / C 106 / G 300, 307 / D 65 / illustration p. 45

86. When a battalion has to prolong itself in column towards the right or left, or has to direct its march in column perpendicularly or diagonally in front, or in rear of either flank, the colonel will cause it to break by company to the right or left, as has just been prescribed ; but when the line breaks to the right, in order to march towards the left, or the reverse, the colonel will command :

Break to the right to march to the left, or

Break to the left to march to the right,

before the command, *by company, right (or left) wheel.*

As soon as the battalion is broken, the lieutenant colonel will place a marker abreast with the right guide of the leading company. The instant the column is put in motion, this company will wheel to the left (or right) march ten paces to the front without changing the guide, and wheel again to the left (or right). The second wheel being completed, the captain will immediately command, *guide left* (or *right*). The guide of this company will march in a direction parallel to the guides of the column. The lieutenant colonel will be careful to place a second marker at the point where the first company is to change direction the second time.

**To Break to the Rear, by the Right or Left, into Column,
And to Advance or Retire by the Right or Left of Companies.**
H 87, 105 / C 108, 135 / G 301 / D 43-45 / illustrations p. 46 - 47

87. When the colonel shall wish to cause the battalion to break to the rear, by the right, into column by company, he will command :

1. *By the right of companies to the rear into column.*
2. *Battalion, right* - FACE. 3. MARCH (or *double quick* - MARCH).

88. At the first command, each captain will place himself before the centre of his company, and caution it to face to the right ; the covering sergeants will step into the front rank.

89. At the second command, the battalion will face to the right ; each captain will hasten to the right of his company, and break two files to the rear ; the first will break the whole depth of the two ranks ; the second file less ; which being executed, the captain will place himself so that his breast may touch lightly the left arm of the front rank man of the last file in the company next on the right of his own. The captain of the right company will place himself as if there were a company on his right, and will align himself on the other captains. The covering sergeant of each company will break to the rear with the right files, and place himself before the front rank of the first file, to conduct him.

90. At the command, *march*, the first file of each company will wheel to the right ; the covering sergeant, placed before this file, will conduct it perpendicularly to the rear. The other files will come successively to wheel on the same spot. The captains will stand fast, see their companies file past, and at the instant the last file shall have wheeled, each captain will command :

1. *Such company.* 2. HALT. 3. FRONT. 4. *Left* - DRESS.

91. At the instant the company faces to the front, its left guide will place himself so that his left arm may touch lightly the breast of his captain.

92. At the fourth command, the company will align itself on its left guide, the captain so directing it, that the new alignment may be perpendicular to that which the company had occupied line of battle, and, the better to judge this, he will step back two paces from the flank.

93. The company being aligned, the captain will command :
FRONT,

and take his place before its centre.

98. To break to the rear by the left, the colonel will give the same

commands as in the case of breaking to the rear by the right, substituting the indication *left*, for that of *right*.

99. The movement will be executed according to the same principles. Each captain will hasten to the left of his company, cause the first two files to break to the rear, and then place his breast against the right file of the company next on the left of his own, in the manner prescribed above.

100. As soon as the two files break to the rear, the left guide of each company will place himself before the front rank man of the head most file, to conduct him.

101. The instant the companies face to the front, the right guide of each will place himself so that his right arm may lightly touch the breast of his captain.

104. This manner of breaking into column being at once the most prompt and regular, will be preferred on actual service, unless there be some particular reason for breaking to the front.

105. If the battalion be in line and at a halt, and the colonel should wish to advance or retire by the right of companies, he will command:

1. *By the right of companies to the front* (or *rear*). 2. *Battalion, right* - FACE.
3. MARCH (or *double quick* - MARCH). 4. *Guide right, (left) or (centre)*.

106. At the first command, each captain will move rapidly two paces in front of the Centre of his company, and caution it to face to the right; the covering sergeants will replace the captains in the front rank.

107. At the second command, the battalion will face to the right, and each captain moving quickly to the right of his company will cause files to break to the front, according to the principles indicated No. 89.

108. At the command, *march*, each captain placing himself on the left of his leading guide will conduct his company perpendicularly to the original line. At the fourth command, the guide of each company will dress to the right, left, or centre, according to the indication given, taking care to preserve accurately his distance.

109. If the colonel should wish to move to the front, or rear, by the left of companies, the movement will be executed by the same means and the same commands, substituting left for right.

COLUMN INTO LINE

Column at Full Distance, Forward into Line of Battle.

H 440 / G 329 / D 87 / illustration p. 48

440. A column being by company, at full distance, right in front, and at a halt, when the colonel shall wish to form it forward into line, [414] the colonel will indicate to the lieutenant colonel a little in advance, the point of *appui*, or rest, for the right, as well as the point of direction to the left ; the lieutenant colonel will hasten with two markers, and establish them in the following manner on the

direction indicated.

415. The first marker will be placed at the point of *appui* for the right front rank man of the leading company ; the second will indicate the point where one of the three left files of the same company will rest when in line ; they will be placed so as to present the right shoulder to the battalion when formed.

416. These dispositions being made, the colonel will command [440] :

1. *Forward into line.*

2. *By company, left half wheel.* 3. MARCH (or *double quick* - MARCH).

441. At the first command, the captain of the leading company will add:

Guide right,

put the company in march, halt it three paces from the markers, and align it against the latter by the right.

442. At the command, *march*, all the other companies will wheel to the left on fixed pivots ; and, at the instant the colonel shall judge, according to the direction of the line of battle, that the companies have sufficiently wheeled, he will command :

4. *Forward.* 5. MARCH. 6. *Guide right.*

443. At the fifth command, the companies, ceasing to wheel, will march straight forward ; and at the sixth, the men will touch elbows towards the right. The right guide of the second company, who is nearest to the line of battle, will march straight forward ; each succeeding right guide will follow the file immediately before him at the cessation of the wheel.

444. The second company having arrived opposite to the left file of the first, its captain will cause it to turn to the right, in order to approach the line of battle ; and when its right guide shall be at three paces from that line, the captain will command :

1. *Second company.* 2. HALT.

445. At the second command, the company, will halt ; the files not yet in line with the guide will come into it promptly, the left guide will place himself on the line of battle, so as to be opposite to one of the three files on the left of the company ; and, as soon as he is assured on the direction by the lieutenant colonel, the captain, having placed himself accurately on the line of battle, will command:

3. *Right* - DRESS.

446. At the instant that the guide of the second company begins to turn to the right, the guide of the third, ceasing to follow the file immediately before him, will march straight forward ; and, when he shall arrive opposite to the left of the second, his captain will cause the company to turn to the right, in order to approach the line of battle, halt it at three paces from that line, and align it by the right, as prescribed for the second company.

447. Each following company will execute what has just been prescribed for the third, as the preceding company shall turn to the right, in order to approach the line of battle.

448. The formation ended, the colonel will command :

Guides - POSTS.

449. The colonel and lieutenant colonel will observe in this formation,

what is prescribed for them on the right into line.

450. A column left in front, will form itself forward into line of battle according to the same principles and by inverse means.

Remarks on the Formation, Forward into Line of Battle.

460. The precision of this movement depends on the direction the companies have at the moment the colonel commands,

Forward - MARCH.

The colonel will judge nicely the point of time for giving this command, observing that, if the direction of the line of battle form with that of the column a right, or nearly a right angle, the companies ought to wheel about the eighth of the circle, and that the more acute the angle formed by the two directions, so much the more the companies ought to wheel before marching straight forward.

461. It is important that each company in marching towards the line of battle should turn exactly opposite the point where its captain ought to place himself on that line ; if a company turns too soon, it will find itself masked, in part, by that which preceded it on the line of battle, and be obliged to unmask itself by the oblique step ; if it turns too late, it will leave an interval between itself and the preceding company to be regained in like manner. In either case, the next company will be led into error, and the fault propagated to the flank of the battalion.

462. The guide of each company ought so to regulate himself in turning, as to bring his company to the halting point parallel with the line of battle.

463. If the angle formed by the line of battle and the primitive direction of the column be so acute, that the companies, on arriving opposite to their respective places on the line of battle, find the captains will themselves nearly parallel to it, the captains will not give the command, *right* (or *left*) *turn*, but each halt his company, place himself on the line, and command :

Right (or *left*) - DRESS.

464. If, on the contrary, the angle formed by the line of battle and the primitive direction of the column be much greater than a right angle, the formation should be executed, not by the movement *forward into line of battle*, but by that of *on the right* (or *left*) *into line of battle*, and according to the principles prescribed for this formation.

465. If a company encounter an obstacle sufficient to prevent it from marching by the front, it will *right* (or *left*) *face* in marching, by the commands and means indicated in the school of the company, Nos. 314 and 315.

The guide will continue to follow the same file behind which he was marching, and will maintain exactly the same distance from the company immediately preceding his own. The obstacle being passed, the company will be formed into line by the command of its captain.

Column at Half Distance, Forward into Line of Battle.

H 508 / C 530 / G 337 / D 93

508. If it be wished to form a column at half distance, forward into line of battle, the colonel will first cause it to close in mass and then deploy it on the leading company.

Column in Mass, Forward into Line of Battle.

H 514 / C 559 / G 339 / D 95 / illustration p. 49

511. When a column in mass, by company arrives behind the line on which it is intended to deploy it, the colonel will indicate, in advance, to the lieutenant colonel, the direction of the line of battle, as well as the point on which he may wish to direct the column. The lieutenant colonel will immediately detach himself with two markers, and establish them on that line, the first at the point indicated, the second a little less than the front of a division from the first.

512. Deployments will always be made upon lines parallel, and lines perpendicular to the line of battle ; consequently, if the column be in march, he will so direct it that it may arrive exactly behind the markers, perpendicularly to, and halt it at three paces from the line of battle.

513. The column, right in front, being halted, it is supposed that the colonel wishes to deploy it on the first company ; he will order the left general guide to go to a point on the line of battle a little beyond that at which the left of the battalion will rest when deployed, and place himself correctly on the prolongation of the markers established before the first company.

514. These dispositions being made, the colonel will command :

1. *On the first company, deploy column.* 2. *Battalion, left* - FACE.

515. At the first command, the chief of the first company will caution it to stand fast ; the chiefs of the other companies will remind them that they will have to face to the left.

516. At the second command, the remaining companies will face to the left ; the chief of each will place himself by the side of its left guide.

517. At the same command, the lieutenant colonel will place a third marker on the alignment of the two first, opposite to one of the three left files of the first company, and then place himself on the line of battle a few paces.

518. The colonel will then command :

3. MARCH (or *double quick* - MARCH).

519. At this command, the chief of the first company will go to its right, and command :

Right - DRESS.

520. At this, the company will dress up against the markers ; the chief of the company will align the company, and then command :

FRONT.

521. The remaining companies, faced to the left, will put themselves in march ; the left guide of the second will direct himself parallel to the line of battle;

the left guides of the other companies will march abreast with the guide of the second ; the guides of the other companies, each preserving the prescribed distance between himself and the guide of the division which preceded his own in the column.

522. The chief of the second company will not follow its movement ; he will see it file by him, and when its right guide shall be abreast with him, he will command :

1. *Second company.* 2. HALT. 3. FRONT.

523. The first command will be given when the company shall yet have seven or eight paces to march ; the second, when the right guide shall be abreast with the chief of the company, and the third immediately after the second.

524. At the second command, the company will halt ; at the third, it will face to the front, and if there be openings between the files, the chief of the company will cause them to be promptly closed to the right ; the left guide will step upon the line of battle, face to the right, and place himself on the direction of the markers established before the first company, opposite to one of the three left files of his company.

525. The company having faced to the front, its chief will place himself accurately on the line of battle, on the left of the first company ; and when he shall see the guides assured on the direction, he will command :

Right - DRESS.

At this, the company will be aligned by the right in the manner indicated for the first.

526. The remaining companies will continue to march ; at the command, *halt*, given to the second, the chief of the third will halt in his own person, place himself exactly opposite to the guide of the second, after this company shall have faced to the front and closed its files ; he will see his company file past, and when his right guide shall be abreast with him, he will command :

1. *Third company.* 2. HALT. 3. FRONT.

527. As soon as the company faces to the front, its chief will place himself two paces before its centre, and command :

1. *Third company, forward.* 2. *Guide right.* 3. MARCH.

528. At the third command, the company will march towards the line of battle ; the right guide will so direct himself as to arrive by the side of the man on the left of the second company, and when the company is at three paces from the line of battle, its chief will halt it, and align it by the right.

529. The chief of the fourth company will conform himself (and the chief of the fifth, if there be a fifth) to what has just been prescribed for the third.

530. The deployment ended, the colonel will command :

Guides - POSTS.

531. At this command, the guides will resume their places in line of battle, and the markers will retire.

Column at Full Distance, Right in Front, to the Left into Line of Battle.

H 390 / C 464 / G 323 / D 80 / illustration p. 50

390. A column, right in front, being at a halt, when the colonel shall wish to form it to the left into line, he will assure the positions of the guides by the means previously indicated, and then command :

1. *Left into line, wheel.*
2. MARCH (or *double quick* - MARCH).

391. At the first command, the right guide of the leading company will hasten to place himself on the direction of the left guides of the column, face to them, and place himself so as to be opposite to one of the three right files of his company, when they shall be in line : he will be assured this position by the lieutenant colonel.

392. At the command, *march*, briskly repeated by the captains, the left front rank man of each company will face to the left, and rest his breast lightly against the right arm of his guide ; the companies will wheel to the left on the principle of wheeling from a halt, conforming themselves to what is prescribed, school of the company, No. 239 ; each captain will turn to his company, to observe the execution of the movement, and, when the right of the company shall arrive at three paces from the line of battle, he will command :

1. *Such company.*
2. HALT.

393. The company being halted, the captain will place himself on the line by the side of the left front rank man of the company next on the right, align himself correctly, and command :

3. *Right* - DRESS.

394. At this command, the company will dress up between the captain and the front rank man on its left, the captain directing the alignment on that man; the front rank man on the right of the right company, who finds himself opposite to its right guide, will lightly rest his breast against the left arm of this guide.

395. Each captain, having aligned his company will command,

FRONT,

and the colonel will add :

Guides - POSTS.

396. At this command, the guides will return to their places in line of battle, each passing through the nearest captain's interval ; to permit him to pass, the captain will momentarily step before the first file of his company, and the covering sergeant behind the same file. *This rule is general for all formations into line of battle.*

397. When companies form line of battle, file closers will always place themselves exactly two paces from the rear rank, which will sufficiently assure their alignment.

398. The battalion being correctly aligned, the colonel, lieutenant colonel, and major, as well as the adjutant and sergeant major, will return to their respective places in line of battle. *This rule is general for all the formations into line of battle;* nevertheless, the battalion being in the school of elementary instruction, the colonel will go to any point he may deem necessary.

399. A column, with the left in front, will form itself *to the right into line of battle*, according to the same principles ; the left guide of the left company will place himself, at the first command, on the direction of the right guides, in a manner corresponding to what is prescribed, No. 391, for the right guide of the right company.

400. At the command, *Guides posts*, the captains will take their places in line of battle as well as the guides. *This rule is general for all formations into line of battle in which the companies are aligned by the left.*

401. A column by division may form itself into line of battle by the same commands, and means, but observing what follows : if the right be in front, at the command, *halt*, given by the chiefs of division, the left guide of each right company will place himself on the alignment opposite to one of the three files on the left of his company ; the left guide of the first company will be assured on the direction by the lieutenant colonel ; the left guides of the other right companies will align themselves correctly on the division guides ; to this end, the division guides (on the alignment) will invert, and hold their pieces up perpendicularly before the centre of their bodies, at the command, *left into line, wheel*. If the column by division be with the left in front, the right guides of left companies will conform themselves to what has just been prescribed for the left guides of right companies and place themselves on the line opposite to one of the three right files of their respective companies.

Column at Full Distance, On the Right (or on the Left), into Line of Battle.

H 414 / C 502 / G 328 / D 83 - 84 / illustration p. 52

414. A column by company, at full distance and right in front, having to form itself on the right into line of battle, the colonel will indicate to the lieutenant colonel a little in advance, the point of *appui*, or rest, for the right, as well as the point of direction to the left ; the lieutenant colonel will hasten with two markers, and establish them in the following manner on the direction indicated.

415. The first marker will be placed at the point of *appui* for the right front rank man of the leading company ; the second will indicate the point where one of the three left files of the same company will rest when in line ; they will be placed so as to present the right shoulder to the battalion when formed.

416. These dispositions being made, the colonel will command :

1. *On the right, into line.*
2. *Battalion, guide right.*

417. At the second command, the right will become the directing flank, and the touch of the elbow will be to that side ; the right guide of the leading company will march straight forward until up with the turning point, and each following guide will march in the trace of the one immediately preceding.

418. The leading company being nearly up with the first marker, its captain will command,

1. *Right turn,*

and when the company is precisely up with this marker, he will add :

2. MARCH.

419. At the command, *march*, the company will turn to the right ; the right guide will so direct himself as to bring the man next to him opposite to the right marker, and when at three paces from him, the captain will command :

1. *First company*. 2. HALT.

420. At the second command, the company will halt ; the files, not yet in line, will form promptly ; the left guide will retire as a file closer ; and the captain will then command :

3. *Right* - DRESS.

421. At this command, the company will align itself ; the two men who find themselves opposite to the two markers, will each lightly rest his breast against the right arm of his marker ; the captain, passing to the right of the front rank, will direct the alignment on these two men. *These rules are general for all successive formations.*

422. The second company will continue to march straight forward ; when arrived opposite to the left flank of the preceding company, it will turn to the right, and be formed on the line of battle, as his just been prescribed ; the right guide will direct himself so as to come upon that line by the side of the man on the left of the first company.

423. At the distance of three paces from the line of battle, the company will be halted by its captain, who will place himself briskly by the side of the man on the left of the preceding company, and align himself correctly on its front rank.

424. The left guide will, at the same time, place himself before one of the three left files of his company, and, facing to the right, he will place himself accurately on the direction of the two markers of the preceding company.

425. The captain will then command :

Right - DRESS.

426. At this command, the second company will dress forward on the line; the captain direct its alignment on the front rank man who has rested his breast against the left guide of the company.

427. The following companies will thus come successively to form themselves on the line of battle, each conforming itself to what has just been prescribed for the one next to the right ; and when they shall all be established, the colonel will command :

Guides - POSTS.

428. At this command, the guides will take their places in line of battle, and the markers placed before the right company will retire.

429. If the column be marching in quick time, and the colonel should wish to cause the movement to be executed in double quick time, he will add the command :

Double quick - MARCH.

At the command, *march*, all the companies will take the double quick step, and the movement will be executed as prescribed, No. 417, and following.

430. The colonel will follow up the formation, passing along the front, and being always opposite to the company about to turn it is thus that he will be the better able to see and to correct the error that would result from a command

given too soon or too late to the preceding company.

431. The lieutenant colonel will, with the greatest care, assure the direction of the guides ; to this end, the instant that the markers are established for the leading company he will move a little beyond the point at which the left of the next company will rest, establish himself correctly on the prolongation of the two markers, and assure the guide of the second company on this direction ; this guide being assured the lieutenant colonel will place himself farther to the rear, in order to assure, in like manner, the guide of the third company, and so on, successively, to the left of the battalion. In assuring the guides in their positions on the line of battle, he will take care to let them first place themselves, and confine himself to rectifying their positions if they do not cover accurately, and at the proper distance, the preceding guides or markers. *This rule is general, for all successive formations.*

432. A column, left in front, will form itself on the left into line of battle according to the same principles : the captains will go to the left of their respective companies to align them, and shift afterwards to their proper flanks, as prescribed in No. 400.

Remarks on the formation on the right, or left, into line of battle.

433. In order that this movement may be executed with regularity, it is necessary to establish the line of battle so that the guide of each company after turning, may have at least ten steps to take in order to come upon that line.

434. In the first exercises, the line of battle will be established on a direction parallel to that of the column : but, when the captains and guides shall comprehend the mechanism of the movement, the colonel will generally choose oblique directions, in order to habituate the battalion to form itself in any direction.

435. When the direction of the line of battle forms a sensible angle with that of the march of the column, the colonel, before beginning the movement, will give the head of the column a new direction parallel to that line : to this end, he will indicate to the guide of the leading company a point in advance, on which this guide will immediately direct himself, and the company will conform itself to the direction of its guide, at the command, or on a mere caution, of the captain, according as the change of direction may require ; each following company will make the same movement, on the same ground, as it shall successively arrive. By this means the guides of all the companies in the column will have, after turning, nearly the same number of paces to take in order to come upon the line of battle.

436. Every captain will always observe, in placing himself on that line, not to give the command, *dress*, until after the guide of his company shall have been assured on the direction by the lieutenant colonel. *This rule is general for all successive formations.*

437. Each captain will cause his company to support arms, the instant that the captain, who follows him, shall have commanded front. *This rule is general for all successive formations.*

438. When, in the execution of this movement, the colonel shall wish to commence firing, he will give the order to that effect to the captain whose

company is the first in line of battle ; this captain will immediately place himself behind the centre of his company, and as soon as the next captain shall have commanded, *front*, he will commence the fire by file, by the commands prescribed, school of the company. At the command, *fire by file*, the marker at the outer file of this first company will retire, and the other will place himself against the nearest man of the next company. The captain of the latter will commence firing as soon as the captain of the third company, in line, shall have commanded, *front* ; the marker before the nearest file of the second company, in line, will now retire, and the guide before the opposite flank will place himself before the nearest file of the third company, in line, and so on, in continuation, to the last company on the left or right of the battalion, according as the formation may have commenced with the right or left in front.

439. In all the successive formations, the same principles will be observed for the execution of the fire by file. This fire will always be executed by the command of each captain of company.

By Inversion to the Right (Or Left) into Line of Battle.

H 407 / C 484 / G 326 / D 85 / illustration p. 50

407. When a column, right in front, shall be under the necessity of forming itself into line faced to the reverse flank, and the colonel shall wish to execute this formation by the shortest movement, he will command :

1. *By inversion, right into line, wheel.* 2. *Battalion, guide right.*

408. At the first command, the lieutenant colonel will place himself in front, and facing to the right guide of the leading subdivision ; at the second command, he will rectify, as promptly as possible, the direction of the right guides of the column ; the captain of the odd company, if there be one, and the column be by division, will promptly bring the right of his company on the direction, and at company distance from the division next in front ; the left guide of the leading subdivision will place himself on the direction of the right guides, and will be assured in his position by the lieutenant colonel ; which being executed, the colonel will command :

3. MARCH (or *double quick* - MARCH).

409. At this, the right front rank man of each subdivision will face to the right, rest his breast lightly against the left arm of his guide, and the battalion will form itself to the right into line of battle, according to the principles prescribed; which being executed, the colonel will command :

Guides - POSTS.

410. If the column be with the left in front, it will form itself, by inversion, to the left into line, according to the same principles.

411. If the colonel should wish the battalion, when formed into line of battle, to be moved forward, the movement will be executed by the commands, and according to the principle's indicated in No. 403 ; always preceding the command, *by companies, right (or left) wheel*, by the command, *by inversion*.

FLANKS INTO COLUMN

By Companies into Line

H 113 / C 151 / G / D 41

113. If the battalion be advancing by the right or left of companies, and the colonel should wish to form line to the front, he will command :

1. *By companies into line.* 2. MARCH (or *double quick* - MARCH).

114. At the command, *march*, briskly repeated by the captains, each company will be formed into line, as prescribed in the school of company, No. 154.

SoC 154. At the command, *march*, the covering sergeant will continue to march straight forward ; the men will advance the right shoulder, take the double quick step, and move into line, by the shortest route, taking care to undouble the files, and to come on the line one after the other.

155. As the front rank men successively arrive in line with the covering sergeant, they will take from him the step, and then turn their eyes to the front.

156. The men of the rear rank will conform to the movements of their respective file leaders, but without endeavoring to arrive in line at the same time with the latter.

Casey SoC 159. If the company, marching either by the right or left flank, be faced about previous to forming line, the men will come into line by twos, and according to the means as above indicated, taking care to undouble files, the two front rank men taking their places in the line at the same time, to be covered by their rear-rank men taking an oblique step.

SoC 157. At the instant the movement begins, the captain will face to his company in order to follow up the execution ; and, as soon as, the company is formed, he will place himself two paces before the centre, face to the front, and take the step of the company.

SoB 113. The colonel will then command, *Guide left*.

115. At the third command, the color and general guides will move rapidly to their places in line, as will be hereinafter prescribed, No. 405.

SoC 158. At the command, *guide left*, the second sergeants will promptly place themselves in the front ranks, on the left, to serve as guide, and the covering sergeants who are on the opposite flank will remain there.

159. When the companies march by the left flank, this movement will be executed by the same commands, and according to the same principles ; the companies being formed, the colonel will command, *guide right*, and the captains will place themselves in front of their companies as above ; the covering sergeants who are on the right of the front rank will serve as guide, and the second sergeants placed on the left flank will remain there.

160. Thus, in a column by company, right or left in front, the covering sergeant and the second sergeant of each company will always to placed on the right and left, respectively, of the front rank ; they will be denominated right guide

and left guide, and the one or the other charged with the direction.

FLANKS INTO LINE

To Form the Battalion on the Right or Left, By File, into Line of Battle.

H 735 / C 820 / G 354

735. The battalion marching by the right flank when the colonel shall wish to form it on the right by file, he will determine the line of battle, and the lieutenant colonel will place two markers on that line, in conformity with what is prescribed, No. 415.

736. The head of the battalion being nearly up with the first marker, the colonel will command :

1. *On the right, by file, into line.* 2. MARCH (or *double quick* - MARCH).

737. At the command, *march*, the leading company will form itself on the right, by file, into line of battle, as indicated in the school of the company, No. 149; the front rank man of the first file will rest his breast lightly against the right arm of the first marker ; the other companies will follow the movement of the leading company ; each captain will place himself on the line at the same time with the front rank man of his first file, and on the right of this man.

738. The left guide of each company, except the leading one, will place himself on the direction of the markers, and opposite to the left file of his company, at the instant that the front rank man of this file arrives on the line.

739. The formation being ended, the colonel will command :

Guides - POSTS.

740. The colonel will superintend the successive formation of the battalion, moving along the front of the line of battle.

741. The lieutenant colonel will, in succession, assure the direction of the guides, and see that the men of the front rank, in placing themselves on the line, do not pass it.

742. If the battalion march by the left flank, the movement will be executed according to the same principles, and by inverse means.

To Form Forward into Line of Battle from Fours

Vol. 2 Morris (SoB) p. 28 / illustration p. 52

The battalion being in column of fours, right in front, marching or at a halt. The colonel commands :

1. *Forward into line.* 2. *By the right of companies to the front.* 3. MARCH.

The leading captain files his company to the right, and halts it when it has marched the length of its front ; he faces it to the front, and dresses it to the right.

Each of the other captains conducts his company by the flank over the shortest line towards the point on the line of battle where his left will rest ; and

having arrived within three paces, he will command :

1. *By file right.* 2. MARCH.

The left guide will throw himself on the line of battle, about twenty paces in advance of his company. The captain will finish the movement by the commands :

1. *(Such) company.* 2. HALT. 3. FRONT. 4. *Right* - DRESS. 5. FRONT.

The Battalion Advancing by the Right of Companies, to Form Line.

Vol. 2 Morris (SoB) pp. 32-33 / illustration p. 45

The colonel commands :

1. *Form line by file right.* 2. MARCH.

At the second command, each captain conducts his company by file right and commands :

1. *Such company.* 2. HALT. 3. FRONT. 4. *Right* - DRESS. 5. FRONT.

The captain commands, *Halt*, as soon as he reaches the point where the right of his company rests. The left guide of each company throws himself on the line of battle opposite the left file, facing right, a moment before his company is halted. The companies being all aligned, the colonel commands :

3. *Guides* - POSTS.

To advance without halting, after having formed line, the colonel commands :

1. *Form line by file right.* 2. MARCH.

3. *Battalion by the left flank.* 4. MARCH.

He will give the third command while the companies are filing to the right, and the fourth at the moment when they unite. The colors and general guides take their places as prescribed for the advance in line. The battalion will advance with the guide centre.

If the greatest celerity is desired, the colonel will command :

1. *By companies into line.* 2. MARCH.

LINES IN RETREAT

To March the Battalion in Retreat, in Line of Battle

H 664 / C 730 / G 345 / D 106

664. The battalion being halted, if it be the wish of the colonel to cause it to march in retreat, he will command :

1. *Face to the rear.* 2. *Battalion, about* - FACE.

665. At the second command, the battalion will face about : the color-rank, and the general guides, if in advance, will take their places in line ; the color-bearer will pass into the rear rank, now leading ; the corporal of his file will step behind the corporal next on his own right, to let the color-bearer pass, and then

step into the front rank, now rear, to re-form the color-file ; the colonel will place himself behind the front rank, become the rear ; the lieutenant colonel and major will place themselves before the rear rank, now leading.

666. The colonel will take post forty paces behind the color-file, in order to assure the lieutenant colonel on the perpendicular, who will place himself at a like distance in front, as prescribed for the advance in line of battle.

667. If the battalion be the one charged with the direction, the colonel will establish markers in the manner indicated, No. 589, except that they face to the battalion, and that the first will be placed twenty-five paces from the lieutenant colonel. If the markers be already established, the officer charged with replacing them in succession will cause them to face about, the moment that the battalion executes this movement, and then the marker nearest to the battalion will hasten to the rear of the two others.

668. These dispositions being made, the colonel will command :

3. *Battalion, forward.*

669. At this command, the color-bearer will advance six paces beyond the rank of file-closers, accompanied by the two corporals of his guard of that rank, the centre corporal stepping back to let the color-bearer pass ; the two file-closers nearest this centre corporal will unite on him behind the color-guard to serve as a basis of alignment for the line of file-closers ; the two general guides will place themselves abreast with the color-rank, the covering sergeants will place themselves in the line of file-closers, and the captains in the rear rank, now leading; the captains in the left wing, now right, will, if not already there, shift to the left of their companies, now become the right.

670. The colonel will then command :

4. *MARCH (or double quick - MARCH).*

671. The battalion will march in retreat on the same principles which govern the advance in line : the centre corporal behind the color-bearer will march exactly in his trace.

672. If it be the directing battalion, the color-bearer will direct himself on the markers, who will, of their own accord, each place himself in succession behind the marker most distant, on being approached by the battalion : the officer charged with the superintendence of the markers, will carefully assure them on the direction.

673. In the case of a subordinate battalion, the color-bearer will maintain himself on the perpendicular by means of points taken on the ground.

674. The colonel, lieutenant colonel, and major will each discharge the same functions as in the advance in line.

675. The lieutenant colonel, placed on the outside of the file closers of the color-company, will also maintain the three file closers of the basis of alignment in a square with the line of direction : the other file closers will keep themselves aligned on this basis.

To halt the battalion marching in retreat, and to face it to the front.

676. The colonel having halted the battalion, and wishing to face it to the front, will command :

1. *Face to the front.* 2. *Battalion, about - FACE.*

677. At the second command, the color-rank, general guides, captains, and covering sergeants, will all retake their habitual places in line of battle, and the color-bearer will re-pass into the front rank.

678. The battalion marching in line of battle by the front rank, when the colonel shall wish to march it in retreat, he will command :

1. *Battalion, right about.* 2. *MARCH.*

679. At the command, *march*, the battalion will face to the rear and move off at the same gait by the rear rank. The principles prescribed, No. 669 and following will be carefully observed.

680. If the colonel should wish the battalion to march again by the front, he will give the same commands.

By the Right of Companies to the Rear

H 105 / C 135, 150 / D 119 / illustration p. 46 - 47

105. If the battalion be in line and at a halt, and the colonel should wish to retire by the right of companies, he will command :

1. *By the right of companies to the rear.* 2. *Battalion, right - FACE.*

3. *MARCH (or double quick - MARCH).* 4. *Guide left.*

106. At the first command, each captain will move rapidly two paces in front of the centre of his company, and caution it to face to the right ; the covering sergeants will replace the captains in the front rank.

107. At the second command, the battalion will face to the right, and each captain moving quickly to the right of his company will cause files to break to the rear, according to the principles indicated, No. 89.

108. At the command, *march*, each captain placing himself on the left of his leading guide will conduct his company perpendicularly to the original line. At the fourth command, the guide of each company will dress to the left taking care to preserve accurately his distance.

109. If the colonel should wish to move to the front, or rear, by the left of companies, the movement will be executed by the same means and the same commands, substituting *left* for *right*.

112. If the colonel should wish to advance or retire by the left of companies, the movement will be executed by the same means and the same commands, substituting *left* for *right*.

**To Form Line of Battle While Marching from
the Right of Companies to the Rear**

Vol. 2 Morris (SoB) p. 50 / illustration p. 47

The colonel commands :

1. *Form line by file left.* 2. MARCH.

Each captain files his company to the left, halts it when it is all on the new direction, faces it to the front, and dresses it to the right.

To Retreat by Alternate Companies.

Modified for companies from Casey, Vol. III / illustration p. 53

[Casey] 688. The retreat by alternate, or odd and even companies, will be executed as follows.

689. The colonel, intending to execute the retreat by alternate companies, will give information of his purpose to the two next officers in rank, who are respectively to command the lines of odd and even companies, and at the same time indicate to the one who is to commence the movement the position in which he will halt his line. The colonel will then command :

1. *Retreat by alternate companies.*
2. *Odd (or even) companies, commence the movement.*

690. These commands having been repeated, the officer entitled to command the line of odd companies, and which line it is supposed ought to commence the movement, will command :

1. *Odd companies, face to the rear.*

691. This having also been repeated, the captains of the designated companies will cause them to face about.

692. The commander of the odd companies will then add :

2. *The (—), the company of direction.*

3. *Companies, forward.* 4. MARCH (or *double quick* - MARCH).

693. At the command, *march*, briskly repeated by the captains of the odd companies, these companies will commence the march, and direct themselves perpendicularly to the rear. The captains of the subordinate companies will maintain them abreast with the directing one in conformity with what is prescribed, No. 454, when the line arrives at the position indicated by the colonel, the commander of this line will command :

1. *Companies.* 2. HALT.

694. At the second command, the line will halt, each captain will immediately face his company about, the commander of the line will rectify the alignment of the directing company, the other companies will be dressed by that, without constraint, however, as to being absolutely on the same general alignment.

695. As soon as the odd companies which form the second line have faced about, the commander of the first line (of even companies) will command :

1. *Face to the rear.*

696. This will be executed as prescribed, No. 691 ; the commander of

this line will then command :

2. *The (—), the company of direction.*

3. *Companies, forward.* 4. MARCH (or *double quick* - MARCH).

697. The first line will march in retreat by the means prescribed, No. 693; each company will be directed upon the middle of the corresponding interval in the second line, cross this line, and march perpendicularly to the rear. When it arrives at the position indicated by the colonel, the first line will be halted and faced about, by the commands and means indicated, Nos. 693-4.

698. The second line, become first, will execute the same movement, and so on alternately.

699. The colonel will superintend both lines, and determine, according to the ground and the distance he may wish to have between the lines, the position each ought successively to occupy.

To re-form the line.

700. The colonel, wishing to re-form the line, will cause the drums to beat a short roll after the first line (the one actually in front) is put in march, which roll will be briskly repeated by all the drums of this line.

701. The companies of the first line will continue to march, and when they find themselves exactly in their intervals of the second, their respective captains will halt them, face them about and rectify their alignment : the colonel, will then give a general alignment if he judge it necessary.

Remarks on the retreat by alternate companies.

702. The commander of each line will endeavor to maintain the necessary harmony between its companies, notwithstanding the intervals between them ; to this end, he will look to the strict execution of what is prescribed, Nos. 693-4.

703. He will more particularly see that all the companies, after crossing the second line, direct themselves perpendicularly to the rear, this being the only means by which the intervals can be preserved with sufficient accuracy to enable the two lines to re-form into one.

704. If the formation is in two lines, the odd or even companies of the second line will face about at the same time with their corresponding ones of the first line ; they will march to the rear at the same time with them, taking care to preserve their proper relative positions and distances.

THE COLUMN IN ROUTE THROUGH DEFILES

H 198 / C 239 / D 74 / Coppee, SoB p. 30 / illustration p. 54

The column being at a halt, by company, and right in front, the colonel

will command :

1. *Column forward.* 2. *Guide left.* 3. MARCH.

The rear rank shorten the step until the distance between it and the front rank is twenty-eight inches ; the men in both ranks carry their arms at will.

If the column should encounter a defile too narrow for the front of a company, the colonel will cause all the companies to break into platoons by his own command, or will give the order to the captain of the first, who will form platoons in his company, and all the others will successively break into platoons, at the same place where the first did : these movements take place before entering the defile.

As soon as the companies are broken, the chiefs of platoons place themselves in the front rank, in place of their guide, who falls back into the rear rank.

If the defile becomes still narrower, the column is broken into sections, successively and at the same place, if the platoons be of at least twelve files. The first sections are commanded by the captain and by the chief of the second platoon; the second by the second lieutenant and orderly sergeant, and, if they be wanting, by the company guides. They all place themselves in the front rank, on the side of direction.

To execute this movement, each chief of platoon causes his platoon to come to *shouldered arms*, and to come to close order ; as soon as the platoon is broken, its chief gives the direction to carry arms at will and to increase the distance between the ranks.

When the colonel wishes to close the ranks, he will command :

1. *Right shoulder shift.* 2. ARMS.

The rear rank will come at once to close order.

If the platoons be less than twelve files, files should be broken to the rear, until the front is reduced to seven files, not including the chief of platoon ; and if it be necessary still further to reduce the front, the men would be brought to *right shoulder shift arms*, would take the quick (or double-quick) step successively and at the command of the chiefs of platoons, so that the rear-rank men, as well as the files broken to the rear, should close to fifteen inches, after which the platoons might be reduced to a front of five files, not including the chief.

If, finally, the defile is only wide enough to give passage to six men abreast, the movement is made by bringing the arms to the shoulder, and marching by the flank.

In proportion as the defile widens, column is formed by platoon, or by section, and the men are again permitted to carry their arms at will.

The ground becoming still wider, companies are formed.

The first subdivision follows all the windings of the defile ; the others march upon its traces, without concerning themselves about the direction.

The soldiers must not seek to avoid the bad parts of the road ; they are to march, as far as practicable, directly before them.

The changes of direction are executed at the order of the chief of each subdivision, without other commands.

The files can only be broken to the rear, on the side of the guide.

CHANGING THE LENGTH OF THE COLUMN

Being in Column at Half Distance, or Closed in Mass, To Take Distances.

H 322 / C 386 / G 313 / D 56 / illustration p. 55

322. A column at half distance will take full distances by the head of the column when it has to prolong itself on the line of battle. If, on the contrary, it has to form itself in line of battle on the ground it occupies, it will take distances on the leading or on the rearmost subdivision, according as the one or other may find itself at the point where the right or left of the battalion ought to rest in line of battle.

To take distances by the head of the column.

323. The column being by company at half distance and at a halt, when the colonel shall wish to cause it to take full distances by the head, he will command :

By the head of column, take wheeling distance.

324. At this command, the captain of the leading company will put it in march ; to this end, he will command :

1. *First company, forward.* 2. *Guide left.*
3. MARCH (or *double quick* - MARCH).

325. When the second shall have nearly its wheeling distance, its captain will command :

1. *Second company, forward.* 2. *Guide left.*
3. MARCH (or *double quick* - MARCH).

326. At the command, *march*, which will be pronounced at the instant that this company shall have its wheeling distance, it will step off smartly, taking the step from the preceding company. Each of the other companies will successively execute what has just been prescribed for the second.

327. The colonel will see that each company puts itself in march at the instant it has its distance.

328. The lieutenant colonel will bold himself at the head of the column, and direct the march of the leading guide.

329. The major will hold himself abreast with the rearmost guide.

330. If the column, instead of being at a halt, be in march, the colonel will give the same commands, and add :

MARCH (or *double quick* - MARCH).

331. If the column be marching in quick time, at the command, *march*, the captain of the leading company will cause *double quick time* to be taken ; which will also be done by the other captains as the companies successively attain

their proper wheeling distance.

332. If the column be marching in *double quick time*, the leading company will continue to march at the same gait. The captains of the other companies will cause *quick time* to be taken, and as each company gains its proper distance, its captain will cause it to retake the *double quick step*.

To Close the Column to Half Distance, or in Mass.

H 252 / C 294 / G 309 / D 52 / illustration p. 56

252. A column by company being at full distance right in front, and at a halt, when the colonel shall wish to cause it to close to half distance, on the leading company, he will command :

1. *To half distance, close column.* 2. MARCH (or *double quick - MARCH*).

253. At the first command, the captain of the leading company will caution it to stand fast.

254. At the command, *march*, which will be repeated by all the captains, except the captain of the leading company, this company will stand fast, and its chief will align it by the left ; the file closers will close one pace upon the rear rank.

255. All the other companies will continue to march, and as each in succession arrives at platoon distance from the one which precedes, its captain will halt it.

256. At the instant that each company halts, its guide will place himself on the direction of the guides who precede, and the captain will align the company by the left ; the file closers will close one pace upon the rear rank.

257. No particular attention need be given to the general direction of the guides before they respectively halt ; it will suffice if each follow in the trace of the one who precedes him.

258. The colonel, on the side of the guides, will superintend the execution of the movement, observing that the captains halt their companies exactly at platoon distance the one from the other.

259. The lieutenant colonel, a few paces in front, will face to the leading guide and assure the positions of the following guides as they successively place themselves on the direction.

260. The major will follow the movement abreast with the last guide.

261. If the column be in march, the colonel will cause it to close by the same commands.

262. If the column be marching in *double quick time*, at the first command, the captain of the leading company will command, *quick time* ; the chiefs of the other companies will caution them to continue their march.

263. At the command, *march*, the leading company will march in *quick time*, and the other companies in *double quick time* and as each arrives at platoon distance from the preceding one, its chief will cause it to march in *quick time*.

264. When the rearmost company shall have gained its distance, the colonel will command :

Double quick - MARCH.

265. When the colonel shall wish to halt the column and to cause it to close to half distance at the same time, he will notify the captain of the leading company of his intention, who at the command, *march* will halt his company and align it by the left.

266. If the column be marching in *quick time*, and the colonel should not give the command, *double quick*, the captain of the leading company will halt his company at the command, *march*, and align it by the left. In the case, where the colonel adds the command, *double quick*, the captains of companies will conform to what is prescribed, No. 262, and the movement will be executed as indicated, No. 263.

MANŒUVRING LINES OF BATTLE

To Advance in Line of Battle.

H 587 / C 648 / G 343 / D 100 / illustration p. 44

587. The battalion being correctly aligned, and supposed to be the directing one, when the colonel shall wish to march in line of battle, he will give the lieutenant colonel an intimation of his purpose, place himself about forty paces in rear of the color-file, and face to the front.

588. The lieutenant colonel will place himself a like distance in front of the same file, and face to the colonel, who will establish him as correctly as possible, by signal of the sword, perpendicularly to the line of battle opposite to the color-bearer. The colonel will next, above the heads of the lieutenant and color-bearer, take a point of direction in the field beyond, if a distinct one present itself, exactly in the prolongation of those first two points.

589. The colonel will then move twenty paces farther to the rear, and establish two markers on the prolongation of the straight line passing through the color-bearer and the lieutenant colonel ; these markers will face to the rear, the first placed about twenty-five paces behind the rear rank of the battalion. and the second at the same distance from the first.

590. The color-bearer will be instructed to take, the moment the lieutenant colonel shall be established on the perpendicular, two points on the ground in the straight line which, drawn from himself, would pass between the heels of that officer ; the first of these points will be taken at fifteen or twenty paces from the color-bearer.

591. These dispositions being made, the colonel will command :

1. *Battalion, forward.*

592. At this, the front rank of the color-guard will advance six paces to the front ; the corporals in the rear rank ; will place themselves in the front rank, and these will be replaced by those in the rank of file closers ; at the same time the two general guides will move in advance, abreast with the color-bearer, the one on

the right, opposite to the captain of the right company, the other opposite to the sergeant who closes the left of the battalion.

593. The captains of the left wing will shift, passing before the front rank, to the left of their respective companies ; the sergeant on the left of the battalion will step back into the rear rank. The covering sergeant of the company next on the left of the color-company, will step into the front rank.

594. The lieutenant colonel having assured the color-bearer on the line between himself and the corporal of the color-file, now in the front rank, will go to the position which will be hereinafter indicated, No. 602.

595. The major will place himself six or eight paces on either flank of the color-rank.

596. The colonel will then command :

2. MARCH (or *double quick* - MARCH).

597. At this command, the battalion will step off with life ; the color-bearer, charged with the step and direction, will scrupulously observe the length and cadence of the pace, marching on the prolongation of the two points previously taken, and successively taking others in advance by the means indicated in the school of the company ; the corporal on his right, and the one on his left, will march in the same step, taking care not to turn the head or shoulders, the color-bearer supporting the color-lance against the hip.

598. The two general guides will march in the same step with the color-rank, each maintaining himself abreast, or nearly so, with that rank, and neither occupying himself with the movement of the other.

599. The three corporals of the color-guard, now in the front rank of the battalion, will march well aligned, elbow to elbow, heads direct to the front, and without deranging the line of their shoulders ; the centre one will follow exactly in the trace of the color-bearer, and maintaining the same step, without lengthening or shortening it, except on an intimation from the colonel or lieutenant colonel, although he should find himself more or less than six paces from the color-rank.

600. The covering sergeant in the front rank between the color-company and the next on the left, will march elbow to elbow, and on the same line, with the three corporals in the centre, his head well to the front.

601. The captains of the color-company, and the company next to the left, will constitute, with the three corporals in the centre of the front rank, the basis of alignment for both wings of the battalion ; they will march in the same step with the color-bearer, and exert themselves to maintain their shoulders exactly in the square with the direction. To this end, they will keep their heads direct to the front, only occasionally casting an eye on the three centre corporals, with the slightest possible turn of the neck, and if they perceive themselves in advance, or in rear of these corporals, the captain, or two captains, will almost insensibly shorten or lengthen the step, so as, at the end of several paces, to regain the true alignment, without giving sudden checks or impulsions to the wings beyond them respectively.

602. The lieutenant colonel, placed twelve or fifteen paces on the right of the captain of the color-company, will maintain this captain and the next one

beyond, abreast with the three centre corporals ; to this end, he will caution either to lengthen or to shorten the step as may be necessary, which the captain, or two captains, will execute as has just been explained.

603. All the other captains will maintain themselves on the prolongation of this basis ; and, to this end, they will cast their eyes towards the centre, taking care to turn the neck but slightly, and not to derange the direction of their shoulders.

604. The captains will observe the march of their companies, and prevent the men from getting in advance of the line of captains ; they will not lengthen or shorten step except when evidently necessary ; because, to correct, with too scrupulous attention, small faults, is apt to cause the production of greater-loss of calmness, silence equality of step, each of which it is so important to maintain.

605. The men will constantly keep their heads well directed to the front, feel lightly the elbow towards the centre, resist pressure coming from the flank, give the greatest attention to the squareness of shoulders, and hold themselves always very slightly behind the line of the captains, in order never to shut out from the view of the latter the basis of alignment ; they will, from time to time, cast an eye on the color-rank, or on the general guide of the wing, in order to march constantly in the same step with those advanced persons.

Remarks on the advance in line of battle.

616. If, in the exercises of detail, or courses of elementary instruction, the officers, sergeants, corporals, and men, have not been well confirmed in the principles of the position under arms, as well as in the length and cadence of the step, the march of the battalion in line will be floating, unsteady, and disunited.

617. If the color-bearer, instead of marching perpendicularly forward, pursue an oblique direction, the battalion will slant ; crowdings in one wing and openings in the other, will follow, and these defects in the march, becoming more and more embarrassing in proportion to the deviation from the perpendicular, will commence near the centre.

618. It is then of the greatest importance that the color-bearer should direct himself perpendicularly forward, and that the basis of alignment should always be perpendicular to the line pursued by him.

619. If openings be formed, if the files crowd each other, if, in short, disorder ensue, the remedy ought to be applied as promptly as possible, but calmly, with few words, and as little noise as practicable.

620. The object of the general guides, in the march in line of battle is, to indicate to the companies near the flanks the step of the centre of the battalion, and to afford more facility in establishing the wings on the direction of the centre if they should be too much in the rear ; hence the necessity that these guides should maintain the same step, and march abreast, or very nearly so, with the color-rank, which it will be easy for them to do by casting from time to time an eye on that rank.

621. If the battalion happen to lose the step, the colonel will recall its

attention by the command,

to the - STEP ;

captains and their companies will immediately cast an eye on the color-rank, or one of the general guides, and promptly conform themselves to the step.

622. Finally, it is of the utmost importance to the attainment of regularity in the march in line of battle, to habituate the battalion to execute with as much order as promptness the movements prescribed, No. 607 and following, for rectifying the direction ; it is not less essential that commanders of battalions should exercise themselves, with the greatest care, in forming their own *coup d'oeil*, in order to be able to judge with precision the direction to be given to their battalions.

To Halt the Battalion, Marching in Line of Battle, and to Align It.

H 635 / C 699 / G 344 / D 104, 151

635. The battalion, marching in the line of battle, when the colonel shall wish to halt it, he will command :

1. *Battalion.* 2. HALT.

636. At the second command, the battalion will halt ; the color-rank and the general guides will remain in front ; but if the colonel should not wish immediately to resume the advance in line, nor to give a general alignment, he will command :

Color and general guides - POSTS.

637. At this command, the color-rank and general guides will retake their places in line of battle, the captains in the left wing will shift to the right of their companies.

638. If the colonel should then judge it necessary to rectify the alignment, he will command :

Captains, rectify the alignment.

639. The captains will immediately cast an eye towards the centre. align themselves accurately, on the basis of the alignment, which the lieutenant-colonel will see well directed, and then promptly dress their respective companies. The lieutenant-colonel will admonish such captains as may not be accurately on the alignment by the command :

Captain of (such) company, or captains of (such) companies, move up or fall back.

640. But when the colonel shall wish to give the battalion a general alignment, either parallel or oblique, instead of rectifying it as above, he will move some paces outside of one of the general guides (the right -will here be supposed) and caution the right general guide and the color-bearer to face him, and then establish them by signal of the sword, on the direction which he may wish to give to the battalion. As soon as they shall be correctly established, the left general guide will place himself on their direction, and be assured in his position by the major. The color-bearer will carry the color-lance perpendicularly between his eyes, and the two corporals of his rank will return to their places in the front rank the moment he shall face to the colonel.

641. This disposition being made, the colonel will command :

1. *Guides - ON THE LINE.*

642. At this command, the right guide of each company in the right wing, and the left guide of each company in the left, will each place himself on the direction of the color-bearer and the two general guides, face to the color-bearer, place himself in rear of the guide who is next before him at a distance equal to the front of his company, and align himself upon the color-bearer and the general guide beyond.

643. The captains in the right wing will shift to the left of their companies, except the captain of the color-company, who will remain on its right, but step into the rear rank ; the captains in the left wing will shift to the right of their companies.

644. The lieutenant-colonel will promptly rectify, if necessary, the positions of the guides of the right wing, and the major those of the other ; which being executed, the colonel will command :

2. *On the centre - DRESS.*

645. At this command, the companies will move up in quick time against the guides, where, having arrived, each captain will align his company according to prescribed principles, the lieutenant-colonel aligning the color-company.

646. If the alignment be oblique, the captains will take care to conform their companies to it in conducting them towards the line.

647. The battalion being aligned, the colonel will command :

3. *Color and guides - POSTS.*

648. At this command, the color-bearer, the general and company guides, and the captains in the right wing, will take their places in the line of battle, and the color-bearer will replace the heel of the color-lance against the right hip.

Change of Front Perpendicularly Forward.

H 743 / C 830 / G 355 / D 109 / illustration p. 57

743. The battalion being in line of battle, it is supposed to be the wish of the colonel to cause a change of front forward on the right company, and that the angle formed by the old and new positions be a right angle, or a few degrees more or less than one ; he will cause two markers to be placed on the new direction, before the position to be occupied by that company, and order its captain to establish it against the markers.

744. The captain of the right company will immediately direct it upon the markers by a wheel to the right on the fixed pivot ; and after having halted it, he will align it by the right.

745. These dispositions being made, the colonel will command :

1. *Change front forward on first company.* 2. *By company right half wheel.*

3. MARCH (or *double quick - MARCH*).

746. At the second command, each captain will place himself before the centre of his company.

747. At the third, each company will wheel to the right on the fixed pivot;

the left guide of each will place himself on its left as soon as he shall be able to pass ; and when the colonel shall judge that the companies have sufficiently wheeled, he will command :

4. *Forward.* 5. MARCH. 6. *Guide right.*

748. At the fifth command, the companies ceasing to wheel will march straight forward ; at the sixth, the men will touch elbows towards the right.

749. The right guide of the second company will march straight forward until this company shall arrive at the point where it should turn to the right ; each succeeding right guide will follow the file immediately before him at the cessation of the wheel, and will march in the trace of this file until this company shall turn to the right to move the line ; this guide will then march straight forward.

750. The second company having arrived opposite to the left file of the first, its captain will cause it to turn to the right ; the right guide will direct himself so as to arrive squarely upon the line of battle, and when he shall be at three paces from that line, the captain will command :

1. *Second company.* 2. HALT.

751. At the second command, the company will halt ; the files not yet in line with the guide will come into it promptly, the left guide will place himself on the line of battle, and as soon as he is assured in the direction by the lieutenant colonel, the captain will align the company by the right.

752. Each following company will conform to what has just been prescribed for the second.

753. The formation ended, the colonel will command :

Guides - POSTS.

754. If the battalion be in march, and the colonel shall wish to change front forward on the first company, and that the angle formed by the old and new positions be a right angle, he will cause two markers to be placed on the new direction, before the position to be occupied by that company, and will command:

1. *Change front forward on first company.*

2. *By company, right half wheel.* 3. MARCH (or *double quick - MARCH*).

755. At the first command, the captains will move rapidly before the centre of their respective companies ; the captain of the first company will command :

1. *Right turn.* 2. *Quick time.*

The captains of the other companies will caution them to wheel to the right.

756. At the command, *march*, the first company will turn to the right according to the principles prescribed in the school of the soldier, No. 402 ; its captain will halt it at three paces from the markers, and the files in rear will promptly come into line. The captain will align the company by the right.

757. Each of the other companies will wheel to the right on a fixed pivot; the left guides will place themselves on the left of their respective companies, and when the colonel shall judge they have wheeled sufficiently, he will command :

4. *Forward.* 5. MARCH. 6. *Guide right.*

758. These commands will be executed as indicated, No. 746 and

following.

759. The colonel will cause the battalion to change front forward on the eighth company according to the same principles and by inverse means.

Change of Front Perpendicularly to the Rear.

H 760 / C 852 / G 357 / D 112 / illustration p. 58

760. The colonel, wishing to change front to the rear on the right company, will impart his purpose to the captain of this company. The latter will immediately face his company about, wheel it to the left on the fixed pivot, and halt it when it shall be in the direction indicated to him by the colonel ; the captain will then face his company to the front, and align it by the right against the two markers, whom the colonel will cause to be established before the right and left files.

761. These dispositions being made, the colonel will command :

1. *Change front to the rear, on first company.* 2. *Battalion, about - FACE.*

3. *By company, left half wheel.* 4. MARCH (or *double quick - MARCH*).

762. At the second command, all the companies, except the right, will face about.

763. At the third, the captains, whose companies have faced about, will each place himself behind the centre of his company, two paces from the front rank, now the rear.

764. At the fourth, these companies will wheel to the left on the fixed pivot by the rear rank ; the left guide of each will, as soon as he is able to pass, place himself on the left of the rear rank of his company, now become the right; and when the colonel shall judge that the companies have sufficiently wheeled, he will command :

5. *Forward.* 6. MARCH. 7. *Guide left.*

765. At the sixth command, the companies will cease to wheel, march straight forward towards the new line of battle, and, at the seventh, take the touch of the elbow towards the left.

766. The guide of each company on its right flank, become left, will conform himself to the principles prescribed, No. 748, p. 35 *herein*.

767. The second company, from the right, having arrived opposite to the left of the first, will turn to the left ; the guide will so direct himself as to arrive parallel with the line of battle, cross that line, and when the front rank, now in the rear, shall be three paces beyond it, the captain will command :

1. *Second company.* 2. HALT.

768. At the second command, the company will halt ; the files which may not yet be in line with the guide, will promptly come into it ; the captain will cause the company to face about, and then align it by the right.

769. All the other companies will execute what has just been prescribed for the second, each as it successively arrives opposite to the left of the company that precedes it on the new line of battle.

770. The formation being ended, the colonel will command :

Guides - POSTS.

771. The colonel will cause a change of front on the left company of the battalion to the rear, according to the same principles and by inverse means.

772. In changes of front, the colonel will give a general superintendence to the movement.

773. The lieutenant colonel will assure the direction of the guides as they successively move out on the line of battle, conforming himself to what has been prescribed in the successive formations.

Remarks on changes of front.

774. When the new direction is perpendicular, or nearly so, to that of the battalion, the companies ought to make about a *half wheel* (the eighth of a circle) before marching straight forward ; but when those two lines are oblique to each other, the smaller the angle which they form, the less ought the companies to wheel. It is for the colonel to judge, according to the angle, the precise time when he ought to give the command, *march*, after the caution, *forward*, and if he cannot catch the exact moment, the word of execution should rather be given a little too soon, than an instant too late.

775. When the old and the new lines form an angle of forty-five or fewer degrees, the colonel will find it necessary to arrest the wheel of the companies when the marching flanks shall have taken but a few paces, or, it may be, have but disengaged, respectively, from the fixed pivots of the next companies ; and in all such cases, the companies will arrive so nearly parallel to the new line, as to be able to align themselves upon it without the intermediate turn to the right or left : to execute the movement under either circumstance supposed, the colonel will command :

Oblique change of front, forward (or to the rear) on (such company).

PLOYING AND DEPLOYING DIVISIONS

Being in Column at Full or Half Distance To Form Divisions.

H 364 / C 438 & 453 / G 318 / D 70 / illustrations, pp. 59 - 60

364. The column being at full or half distance, right in front, and at a halt, when the colonel shall wish to form divisions, he will command :

1. *Form divisions.*
2. *Left companies, left - FACE.*
3. *MARCH (or double quick - MARCH).*

365. At the first command, the captains of the left companies will caution them to face to the left.

366. At the second command, the left companies will face to the left, and their captains will place themselves by the side of their respective left guides.

367. The right companies, and their captains will stand fast ; but the right and left guides of each of these companies will place themselves respectively before the right and left files of the company, both guides facing to the right, and each resting his right arm gently against the breast of the front rank man of the file, in order to mark the direction.

368. At the command, *march*, the left companies only will put themselves in march, their captains standing fast ; as each shall see that his company, filing past, has nearly cleared the column, he will command :

1. *Such company.*
2. *HALT.*
3. *FRONT.*

369. The first command will be given when the company shall yet have four paces to march ; the second at the instant it shall have cleared its right company ; and the third immediately after the second.

[380.] The captains of the left companies will each place himself before the centre of his company. and command,

1. *Such company, forward.*
2. *Guide right.*
3. *MARCH.*

381. The right guide of each left company will so direct his march as to arrive by the side of the man on the left of the right company. The left company being nearly up with the rear rank of the right company, its captain will halt it, and the movement will be finished as prescribed, No. 371 and following.

371. The left guide will place himself at the same time before one of the three left files of his company, face to the right, and cover correctly the guides of the right company ; the moment his captain sees him established on the direction, he will command :

Right - DRESS.

372. At this, the left company will dress forward on the alignment of the right company ; the front rank man, who may find himself opposite to the left guide, will, without preceding his rank, rest lightly his breast against the right arm of this guide ; the captain of the left company will direct its alignment on this man, and the alignment being assured, he will command,

FRONT ;

but not quit his position.

373. The colonel seeing the divisions formed, will command :

Guides - POSTS.

374. At this, the guides who have marked the fronts of divisions will return to their places, in column, the left guide of each right company passing through the interval in the centre of the division, and the captains will place themselves as prescribed, No. 75.

SoB 75. When the battalion breaks by division, the indication division will be substituted in the commands for that of company ; the chief of each division (the senior captain) will conform himself to what is prescribed for the chief of company, and will place himself two paces before the centre of his division ; the junior captain, if not already there, will place himself in the interval between the two companies in the front rank, and be covered by the covering sergeant of the left company in the rear rank. The right guide of the right company will be the right guide, and the left guide of the left company, the left guide of the

division.

Remarks on the formation of divisions from a halt.

384. As this movement may be considered as the element of deployments, it ought to be executed with the utmost accuracy.

385. If companies marching by the flank do not preserve exactly their distances, there will be openings between the files at the instant of facing to the front.

386. If captains halt their companies too early, they will want space, and the files which have not cleared the flanks of the standing companies will not be able to dress into line without pushing their ranks laterally.

387. If on the contrary the companies be halted too late, it will be necessary for them to incline to the right or left in dressing ; and in deployments, either of these faults would lead to error in the following companies.

388. As often as a guide shall have to step out to place himself before his subdivision in order to mark the direction, he will be particularly careful to place himself so as to be opposite to one of the three outer files of the subdivision when they shall be aligned : if he take too much distance, and neither of those files finds itself against him, the chiefs of the subdivision will have no assured point on which to direct the alignment.

To Ploy the Battalion into Column Doubled on the Centre.

H 776 / C 875-898 / G 358 / D 124-131/ illustration p. 61

776. This movement consists in deploying the corresponding companies of the right and left wings into column at company distance, or closed in mass, in rear of the two centre companies, according to the principles prescribed, Article Third, Part Second, of this School.

777. The colonel, wishing to form the double column at company distance, (the battalion being in line of battle,) will command :

- 1. *Double column, at half distance.* 2. *Battalion, inwards - FACE.*
- 3. **MARCH** (or *double quick - MARCH*).

778. At the first command, the captains will place themselves two paces in front their respective companies ; the captains of the two centre companies will caution them to stand fast, and the other captains will caution their companies to face to the left and right, respectively. The covering sergeants will step into the front rank.

779. At the second command, the fourth and fifth companies will stand fast ; the others of the right wing will face to the left, and the others of the left wing will face to the right ; each captain whose company has faced, will hasten to break to the rear the two files at the head of his company ; the left guide of each right company, and the right guide of each left company, will each place himself at the head of its front rank, and the captain by the side of his guide.

780. At the command, *march*, the fourth and fifth companies, which are

to form the first division, will stand fast ; the senior captain of the two will place himself before the centre of the division, and command :

Guide right ;

the junior captain will place himself in the interval between the two companies, and the left guide of the left company will place himself in the front rank on the left of the division, as soon as he shall be able to pass.

781. All the other companies, conducted by their captains, will step off with life to arrange themselves in column at company distance, each company behind the preceding one in the column of the same wing, so that, in the right wing, the third may be next behind the fourth, the second next to the third, and so on to the right company and, in the left wing, the sixth may be next behind the fifth, the seventh next to the sixth, and so on to the left company of the battalion.

782. The corresponding companies of the two wings will unite into divisions in arranging themselves in column ; an instant before the union, at the centre of the column, the left guides of right companies will pass into the line of file closers, and each captain will command :

- 1. *Such company.* 2. *Halt.* 3. **FRONT.**

783. At the second command, which will be given at the instant of union, each company will halt ; at the third, it will face to the front. The senior captain in each division will place himself on its right, and command,

Right - DRESS,

and the junior captain will place himself in the interval between the two companies. The division being aligned, its chief will command,

FRONT,

and take his position two paces before its centre.

784. The column being thus formed, the divisions will take the respective denominations of *first, second, third, &c.*, according to position in the column, beginning at the front.

785. The lieutenant colonel, who, at the second command given by the colonel, will have placed himself at a little more than company distance in rear of the right guide of the first division, will assure the right guides on the direction as they successively arrive, by placing himself in their rear.

786. The music will pass to the rear of the column.

793. The double column, closed in mass, will be formed according to the same principles and by the same commands, substituting the indication, *closed in mass*, for that of *at half distance*.

795. The double column at company distance will be closed in mass, or, if in mass, will take half distance, by the commands and means indicated for a simple column by division.

Deployment of the Double Column, Faced to the Front.

H 796 / C 946-955 / G 360 / D 132-134 / illustration p. 62

796. The colonel, wishing to deploy the double column, will place a marker respectively before the right and left files of the first division, and a third

before the left file of the right company, same division ; which being done, he will cause the two general guides to spring out on the alignment of the markers a little beyond the points at which the respective flanks of the battalion ought to rest ; he will then command :

1. *Deploy column.* 2. *Battalion, outwards* - FACE.

3. *MARCH* (or *double quick* - *MARCH*).

797. The column will deploy itself on the two companies at its head, according to the principles prescribed for the deployment of columns in mass. The captains of these companies will each, at the command, *march*, place himself on the right of his own company, and align it by the right ; the captain of the fourth will then place himself in the rear rank, and the covering sergeant in the rank of file closers, at the moment the captain of the third shall come to its left to align it.

798. The deployment being ended, the colonel will command :

Guides - POSTS.

799. If it be the wish of the colonel to cause the fire to commence pending the deployment, he will give an order to that effect to the captains of the fourth and fifth companies, and the fire will be executed according to the principles prescribed, No. 438, p. 18 *herein*.

Remark on the deployment of the double column.

815. The depth of the double column, at company distance, being inconsiderable, closing it in mass, if at a halt, in order to deploy it, may be dispensed with ; but if it be in march, it will be preferable to cause it so to close, in halting, before deploying.

816. The double column will be deployed habitually on the centre companies, but the colonel may sometimes deploy it on any interior company, or on the first or eighth company.

To Play the Battalion into Close Column.

H 117 / C 157 / G 303 / D 47 / illustration p. 62

117. This movement may be executed by company or by division, on the right or left subdivision, or on any other subdivision, right or left in front.

119. To play the battalion into close column by company or by division in rear of the first, the colonel will command :

1. *Close column, by division.* 2. *On the first division, right in front.*

3. *Battalion, right* - FACE. 4. *MARCH* (or *double quick* - *MARCH*).

120. At the second command, all the chiefs of company or division will place themselves before the centres of their companies or divisions ; the chief of the first will caution it to stand fast ; the chiefs of the others will remind them that they will have to face to the right, and the covering sergeant of the right company of each company or division will replace his captain in the front rank, as soon as the latter steps out.

121. At the third command, the last three companies or divisions will face

to the right ; the chief of each company or division will hasten to its right, and cause files to be broken to the rear, as indicated, No. 89 ; the right guide will break at the same time, and place himself before the front rank man of the first file, to conduct him, and each chief of division will place himself by the side of this guide.

122. The moment divisions face to the right, the junior captain in each will place himself on the left of the covering sergeant of the left company, who will place himself in the front rank. *This rule is general for all the deployments by division.*

123. At the command, *march*, the chief of the first company or division will add, *guide left* ; at this, its left guide will place himself on its left, as soon as the movement of the second company or division may permit, and the file closers will advance one pace upon the rear rank.

124. All the other companies or divisions, each conducted by its chief, will step off together, to take their places in the column ; the second will gain, in wheeling by file to the rear, the space of six paces, which ought to separate its guide from the guide of the first company or division, and so direct its march as to enter the column on a line parallel to this company or division ; the third and fourth companies or divisions will direct themselves diagonally towards, but a little in rear of, the points at which they ought, respectively, to enter the column ; at six paces from the left flank of the column, the head of each of these divisions will incline a little to the left, in order to enter the column as has just been prescribed for the second, taking care also to leave the distance of six paces between its guide and the guide of the preceding company or division. At the moment the companies or divisions put themselves in march to enter the column, the file closers of each will incline to the left, so as to bring themselves to the distance of a pace from the rear rank.

125. Each chief of the companies or divisions will conduct his company division till he shall be up with the guide of the directing one ; the chief will then himself halt, see his company or division file past, and halt it the instant the last file shall have passed, commanding :

1. *Such division* ; 2. *HALT* ; 3. *FRONT.* 4. *Left* - DRESS.

126. At the second command, the company or division will halt ; the left guide will place himself promptly on the direction, six paces from the guide which precedes him, in order that, the column being formed, the companies or divisions may be separated the distance of four paces.

127. At the third command, the company or division will face to the front ; at the fourth, it will be aligned by its chief, who will place himself two paces outside of his guide, and direct the alignment so that his company or division may be parallel to that which precedes - which being done, he will command,

FRONT,

and place himself before the centre of his company or division.

128. If any company or division, after the command, *FRONT*, be not at its proper distance, and this can only happen through the negligence of its chief, such company or division will remain in its place, in order that the fault may not be propagated.

129. The colonel will superintend the execution of the movement, and cause the prescribed principles to be observed.

130. The lieutenant colonel, placing himself in succession in rear of the left guides, will assure them on the direction as they arrive, and then move to his place outside of the left flank of the column six paces from, and abreast with, the first company or division. In assuring the guides on the direction, he will be a mere observer, unless one or more should fail to cover exactly the guide or guides already established. *This rule is general.*

131. The major will follow the movement abreast with the left of the fourth company or division, and afterwards take his position outside of the left flank of the column, six paces from, and abreast with, this company or division.

- END TEXT-



1. Fire by [company] [wing] [battalion] [file] [rank] .

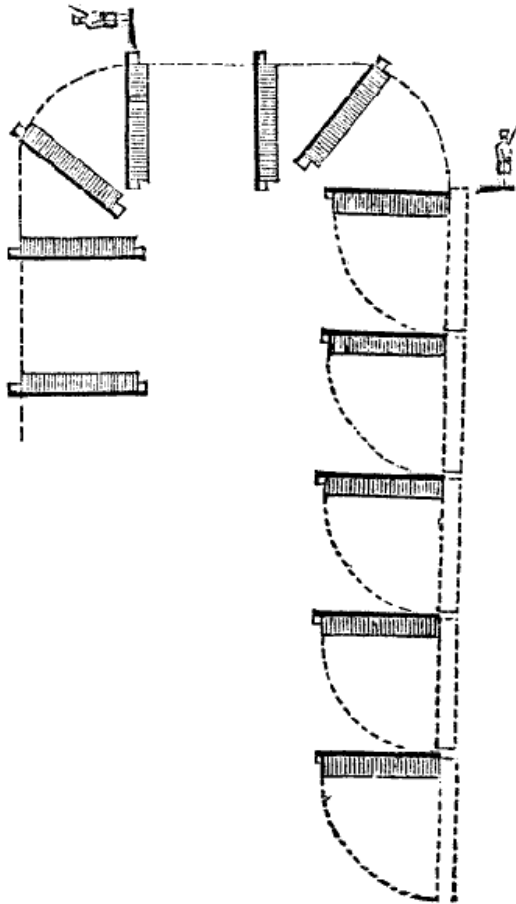


Post for captains is four paces behind rear of file closers. FSgts and left most SSgt move to rank of file closers, but remain opposite their prior interval. (See, above illustration.) Front rank of color guard moves to rear rank of battalion. With front cleared and with supervisors in rear, colonel may give next command: "2. Commence firing" if by company or "2. Battalion. 3. READY" by battalion, file or rank.

1. Battalion, forward. 2. MARCH.



Posts for Captains is on the outside of their respective companies. Left most second sergeant posts in the rear rank in a manner similar to first sergeants.

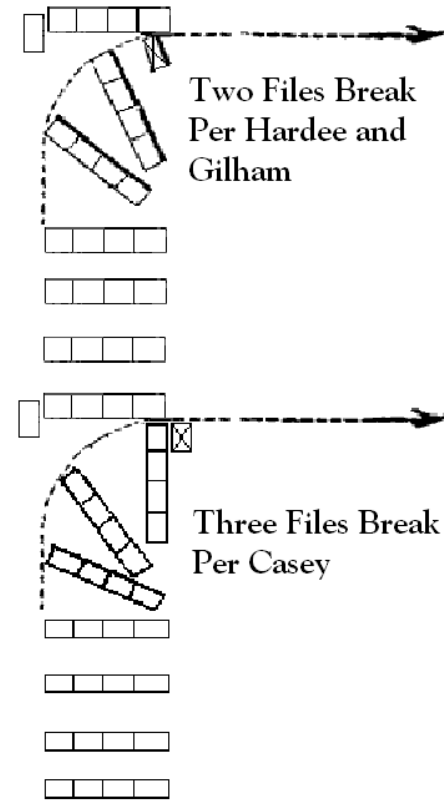


Break to the Right to March to the Left

H 68 & 86 / C 65 & 77 / G 300 & 307 / D 24 & 42 / p. 7 - 8 herein

The colonel will command, *Break to the right to march to the left*, before the command, *by company, right (or left) wheel*. The instant the column is put in motion, the first company will wheel to the left, march ten paces to the front without changing the guide, and wheel again to the left. The second wheel being completed, the captain will immediately command, *guide left*.

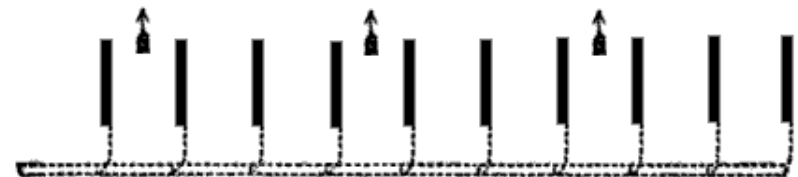
The battalion proceeds as a column of companies at full wheeling distance, right in front.



**To Break to the Rear, by the Right or Left, into Column,
And to Advance or Retire by the Right or Left of Companies.**
H 87 / C 108, 112, 121 / G 301 / D 43-45 / p. 9 and p. 24 herein

1. *By the right of companies to the rear into column.*
2. *Battalion, right - FACE.* 3. *MARCH (or double quick - MARCH).*

Companies can be broken to the front or rear ; right or left ; into column or remain by the right (left) flank. All these manœuvres can be performed from the halt or during the march.



By the right of companies to the front.



The Battalion Advancing by the Right of Companies, to Form Line.

Vol. 2 Morris (SoB) pp. 32-32 / p. 22 herein

The colonel commands:

1. *Form line by file right.* 2. MARCH.

At the second command, each captain conducts his company by file right and commands:

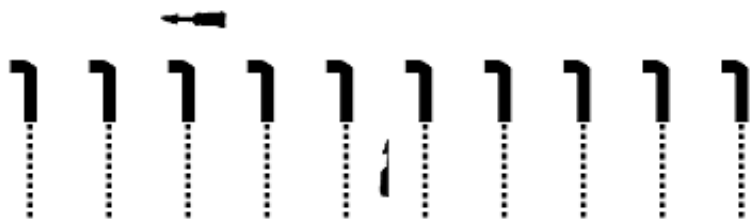
1. *Such company.* 2. HALT.
3. FRONT. 4. *Right - DRESS.* 5. FRONT.

The captain commands, *Halt*, as soon as he reaches the point where the right of his company rests. The left guide of each company throws himself on the line of battle opposite the left file, facing right, a moment before his company is halted. The companies being all aligned, the colonel commands:

3. *Guides- POSTS.*

To advance without halting, after having formed line, the colonel commands:

1. *Form line by file right.* 2. MARCH.
3. *Battalion by the left flank.* 4. MARCH.



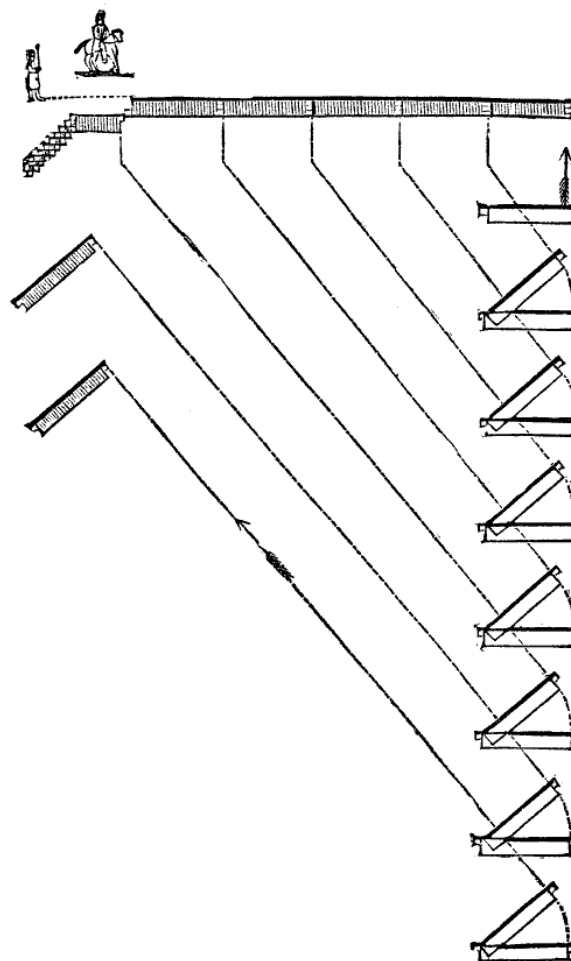
**To Form Line of Battle While
Marching to the Right of Companies to the Rear**

Vol. 2 Morris (SoB) p. 50 / p. 25 herein

The colonel commands:

1. *Form line by file left.* 2. MARCH.

Each captain files his company to the left, halts it when it is all on the new direction, faces it to the front, and dresses it to the right.



Column at full distance, forward into line of battle.

H 440 / G 329 / D 87 / p. 10 herein

The colonel commands:

1. *Forward into line.* 2. *By company, left half wheel.*
3. MARCH (or *double quick - MARCH*).

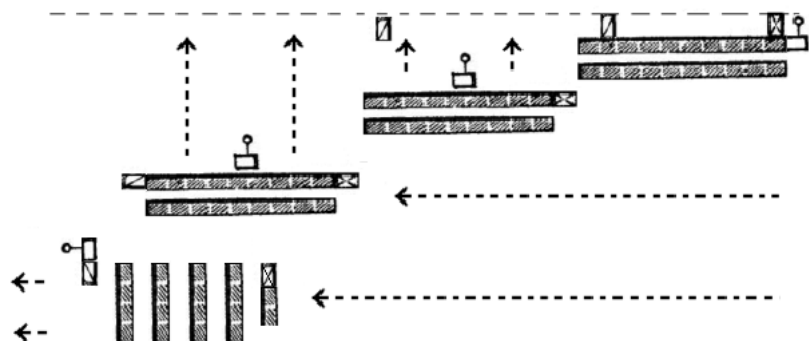
Then:

4. *Forward.* 5. MARCH. 6. *Guide right.*

Each captain commands independently:

Right turn - MARCH.

The companies dress independently onto the line of battle.



Column at Half Distance or in Mass, Forward into Line of Battle

H 514, 508 / C 559, 530 / G 339, 337 / D 95, 93 / **p. 13 herein**

The colonel commands :

1. *On the first company, deploy column.*
2. *Battalion, left - FACE.* 3. MARCH (or *double quick - MARCH*).

At this command, the chief of the first company will go to its right, and command :

Right - DRESS. FRONT.

The remaining companies, faced to the left, will march. The chief of the second company will see his company file by him, and when its right guide shall be abreast with him, he will command :

1. *Second company.* 2. HALT. 3. FRONT. 4. *Right - DRESS.*

The remaining companies will continue to march ; at the command, *halt*, given to the second, the chief of the third will halt his own person, place himself exactly opposite to the guide of the second. After this company shall have faced front and closed its files, he will see his company file past, and when his right guide shall be abreast with him, he will command :

1. *Third company.* 2. HALT. 3. FRONT.

The captain will place himself two paces before its centre and command:

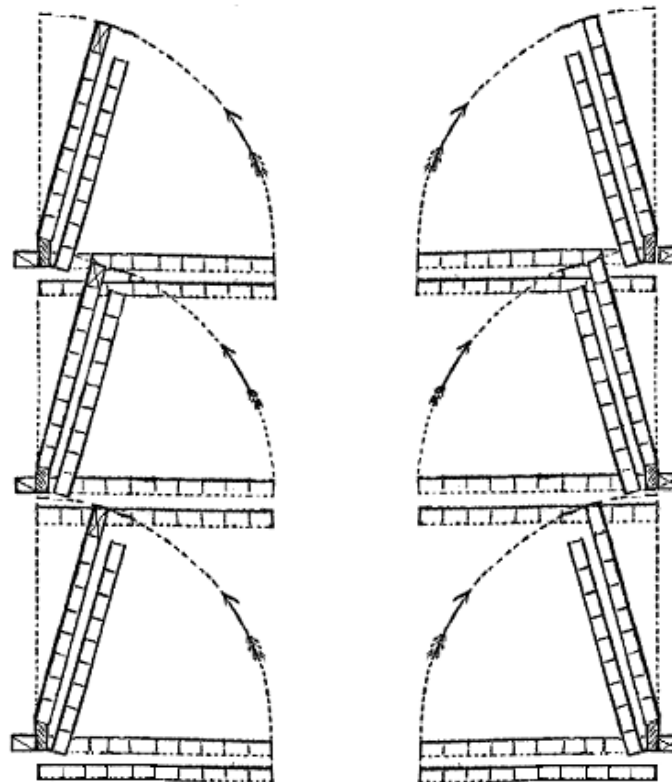
1. *Third company, forward.* 2. *Guide right.* 3. MARCH.

At the third command, the company will march towards the line of battle; the right guide will direct himself to arrive by the side of the man on the left of the second company. When the company is at three paces from the line of battle, its chief will halt and align it by the right.

The chiefs of the remaining companies will conform themselves to what has just been prescribed for the third.

The colonel will command :

Guides - POSTS.



Left into Line, Wheel
p. 15

*By Inversion,
Right into Line, Wheel - p. 19*

1. ***Left into line, wheel.*** 2. MARCH (or *double quick - MARCH*).

H 390 / C 464 / G 323 / D 80 / **p. 15 herein**

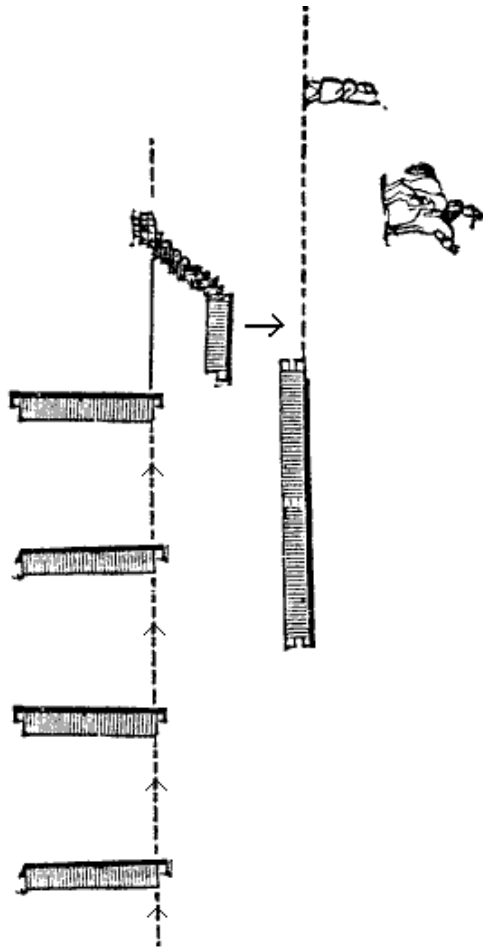
and

1. ***By inversion, right into line, wheel.*** 2. *Battalion, guide right.*

Then :

3. MARCH (or *double quick - MARCH*).

H 407 / C 484 / G 326 / D 85 / **p. 19 herein**



**Column at Full Distance,
On the Right (or on the Left), into Line of Battle.**

H 414 / C 502 / G 328 / D 83 - 84 / p. 16 herein

The colonel commands :

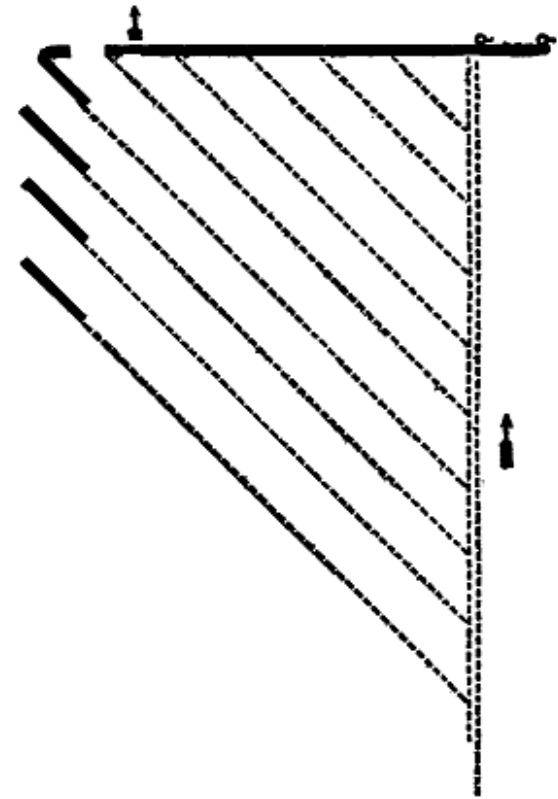
1. *On the right, into line.* 2. *Battalion, guide right.*

Near the marker, the captain of the first company commands :

1. *Right turn.*

At the marker, the captain commands :

2. *MARCH.*



To Form Forward into Line of Battle from Fours

Vol. 2 Morris (SoB) p. 28 / p. 21 herein

From a column of fours, right in front, marching or at a halt, the colonel commands :

1. *Forward into line.* 2. *By the right of companies to the front.* 3. *MARCH.*

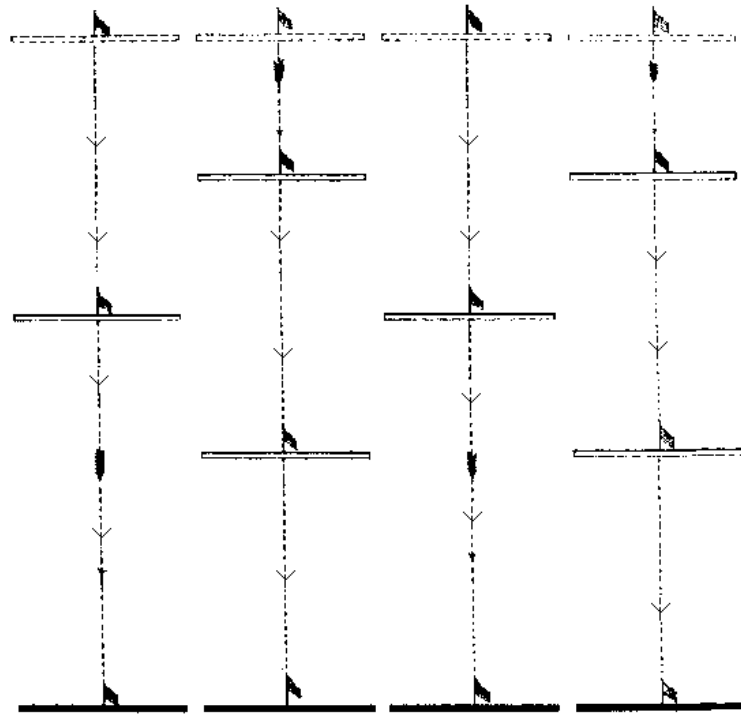
The leading captain files his company right and halts it when it has marched the length of its front ; he faces it to the front, and dresses it to the right.

Each captain will conduct his companies by the flank over the shortest line towards the point on the line of battle where his left will rest ; and having arrived within three paces behind the line, each will command :

1. *By file right.* 2. *MARCH.*

The left guide will throw himself on the line of battle. Each captain will finish the movement by the commands :

1. *(Such) company.* 2. *HALT.* 3. *FRONT.* 4. *Right - DRESS.* 5. *FRONT.*



To Retreat by Alternate Companies.

Modified for companies from Casey 688 of Vol. III and from Scott 2529 of Evolutions of the Line / p. 25 herein

The colonel commands :

1. *Retreat by alternate companies.*
2. *Odd companies, commence the movement.*

The lieutenant colonel commands :

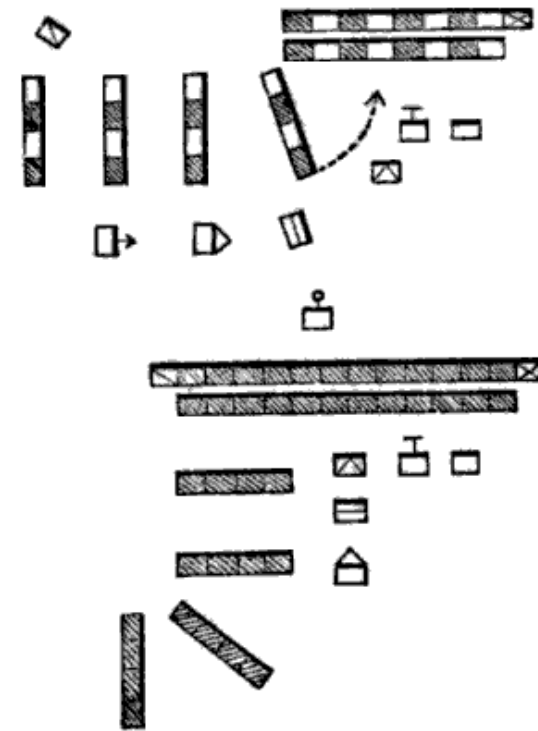
1. *Odd companies, face to the rear.*
2. *The (—), the company of direction. 3. Companies, forward.*
4. *MARCH (or double quick - MARCH).*

At the location chosen by the colonel, the lieutenant colonel commands:

1. *Companies. 2. HALT.*

The major commands :

1. *Even companies, face to the rear.*
2. *The (—), the company of direction. 3. Companies, forward.*
4. *MARCH (or double quick - MARCH).*



To Break Files to the Rear, and to Bring Them Again into Line.

HB 198, HS 289 / CB 239, CS 294 / G 251 / D 74 / p. 26 herein

Files are to be so broken that, whereas they were marching by the front, they shall be marching in the same direction by the flank. The files broken off double and gain the rear of the nearest files that continue in line. Apply to these files what is normally performed at the commands, 1. *By the right (or left) flank.* 2. *By file left (or right.)* The captain commands :

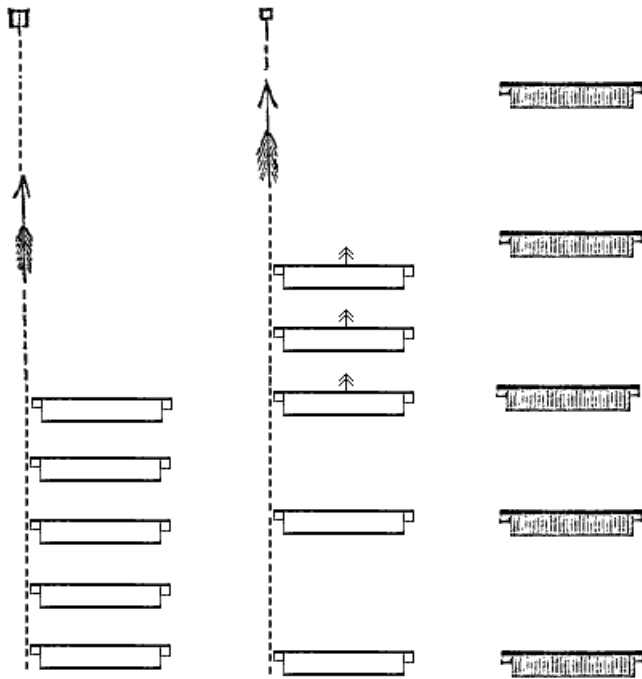
1. *Two files from left (or right) to rear. 2. MARCH.*

Two files on the left (or right) of the company will face to the right (or left) and double while the others will continue to march straight-forward. The left (right) guide closes in to the flank. The company front may be diminished by breaking off successive groups of two files, but the new files must always be broken from the same side.

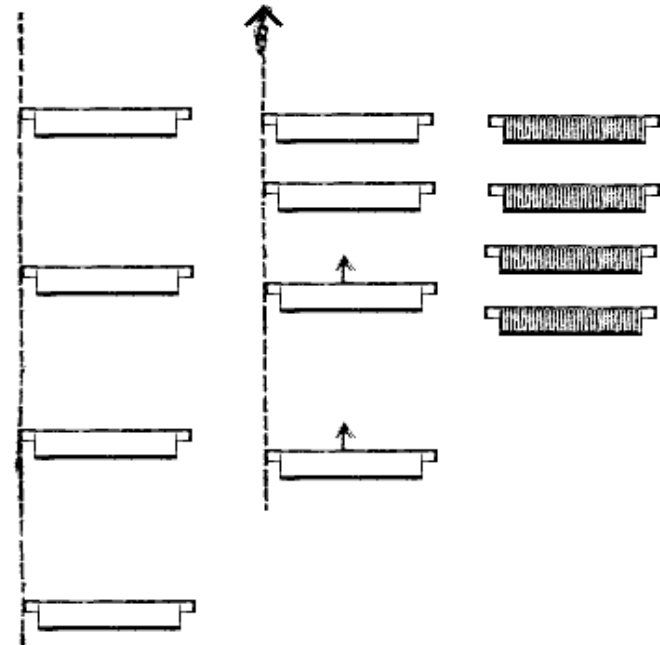
To cause broken files broken to return into line, the captain commands:

1. *Two files into line. 2. MARCH.*

The designated files come into line, precisely as files do when the command is, *By company into line.*



*To take wheeling distance on eighth company
(No. 334).*



To Close the Column to Half Distance, or in Mass.
H 252 / C 294 / G 309 / D 52 / p. 29 herein

**Being in Column at Half Distance, or Closed in Mass,
To Take Distances.**

H 322 / C 386 / G 313 / D 56 / p. 28 herein

The colonel commands :

By the head of column, take wheeling distance.

The first captain commands :

1. *First company, forward.* 2. *Guide left.*
3. **MARCH** (or *double quick - MARCH*).

When the second shall have nearly its wheeling distance, its captain will command :

1. *Second company, forward.* 2. *Guide left.*
3. **MARCH** (or *double quick - MARCH*).

The colonel commands :

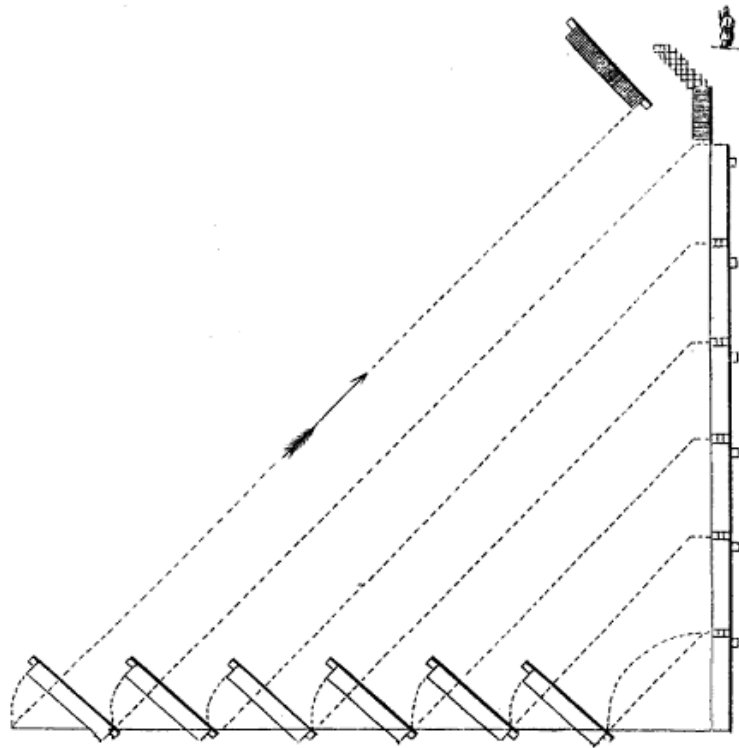
1. *To half distance, close column.*

2. **MARCH** (or *double quick - MARCH*).

The command, *march*, is repeated by all the captains, except the captain of the leading company.

All the other companies will march, and as each in succession arrives at platoon distance from the one which precedes, its captain will halt it.

At the instant that each company halts, its guide will place himself on the direction of the guides who precede.



Change of Front Perpendicularly Forward.
H 743 / C 830 / G 355 / D 109 / p. 35 herein

The captain of the right company performs a fixed pivot wheel to the right onto the new line designated by the colonel then sets markers on the new line for the benefit of the subsequent companies.

The colonel then commands :

1. *Change front forward on first company.*
2. *By company right half wheel.*
3. MARCH (or *double quick - MARCH*).

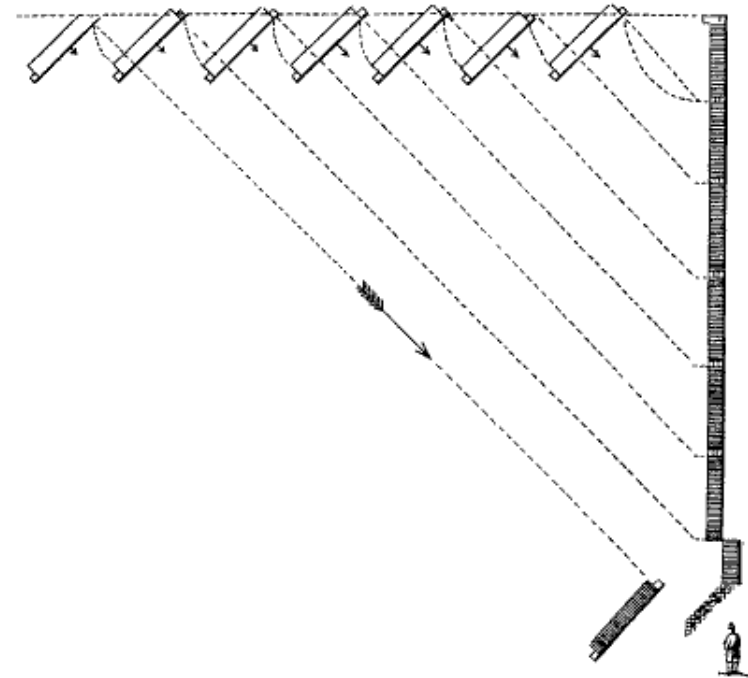
The colonel commands :

4. *Forward.* 5. MARCH. 6. *Guide right.*

Each captain commands independently :

Right turn - MARCH.

The companies dress independently onto the line of battle.



Change of Front Perpendicularly to the Rear.
H 760 / C 852 / G 357 / D 112 / p. 36 herein

The captain of the right company about faces his company and performs a fixed pivot wheel to the left onto the new line as designated by the colonel. The captain then sets markers on the new line for the benefit of the subsequent companies.

The colonel then commands :

1. *Change front to the rear, on first company.* 2. *Battalion, about - FACE.*
3. *By company, left half wheel.* 4. MARCH (or *double quick - MARCH*).

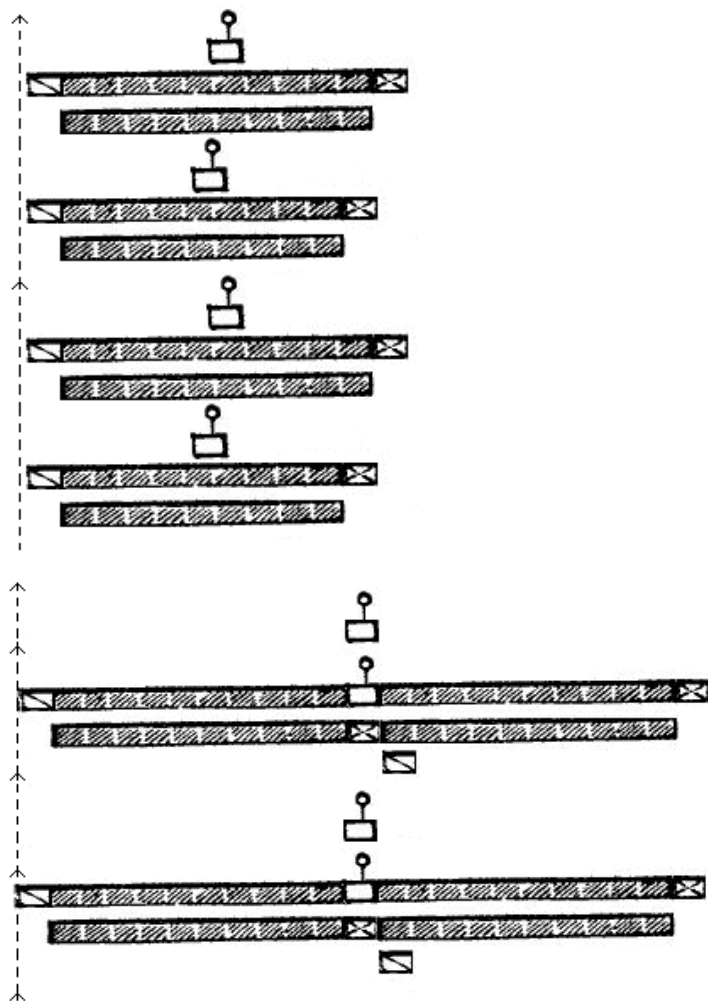
The colonel next commands :

5. *Forward.* 6. MARCH. 7. *Guide left.*

Each captain commands independently :

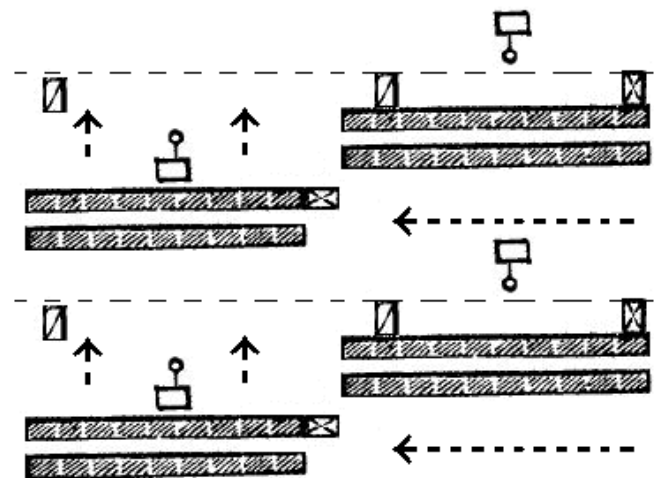
Left turn - MARCH.

The companies cross the new line of battle and halt beyond the line. The captains about face their companies and dress to the right onto the new line of battle.



**Column of Companies, Right in Front
Column of Divisions, Right in Front
p. 37 herein**

In the column of divisions, the senior captains are two steps in front of their divisions. The junior captains are in the front rank behind the senior captain. The second sergeants of the right companies return to the file closer rank after division is formed.



**Being in Column of Companies at Full or Half Distance
To Form Divisions.**

H 364 / C 438 & 453 / G 318 / D 70 / p. 37 herein

From a column of companies, right in front, the colonel orders :

1. *Form divisions.* 2. *Left companies, left - FACE.*
3. *MARCH* (or *double quick - MARCH*).

The right companies and their captains stand fast ; but the right and left guides of each of these companies will place themselves respectively before the right and left files of the company, both guides facing to the right, and each resting his right arm gently against the breast of the front rank man of the file, in order to mark the direction.

The left companies only will put themselves in march, their captains standing fast. When his company nearly clears the column, he commands :

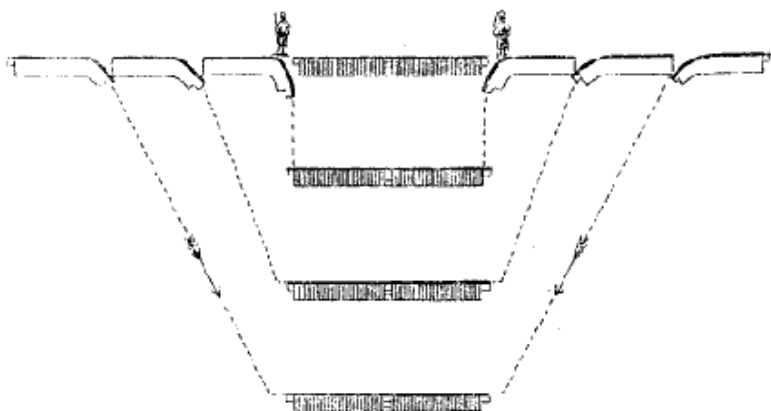
1. *Such company.* 2. *HALT.* 3. *FRONT.*

The first command will be given when the company shall yet have four paces to march ; the second at the instant it shall have cleared its right company; and the third immediately after the second.

The left captains will place themselves before the centre of their companies.

1. *Such company, forward.* 2. *Guide right.* 3. *MARCH.*

The left captains will halt and dress onto the right companies. If the companies are in closed column, as shown, they will dress without marching forward.



To Ploy the Battalion into Column Doubled on the Centre.

H 776 / C 875-898 / G 358 / D 124-131 / p. 39 herein

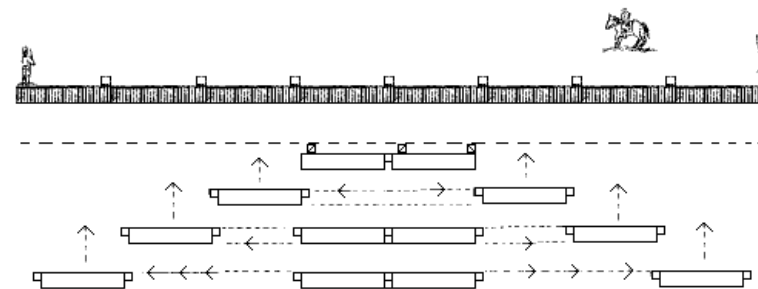
The colonel, wishing to form the double column at company distance from a line of battle, will command :

1. *Double column, at half distance.* 2. *Battalion, inwards - FACE.*
3. *MARCH (or double quick - MARCH).*

The two centre companies stand fast. The outside companies to face inward, and each company will break two ranks to the rear.

The outside companies will step off with life to arrange themselves in column at company distance, each company behind the preceding one in the column of the same wing.

The corresponding companies of the two wings will unite into divisions in arranging themselves into a column of divisions.

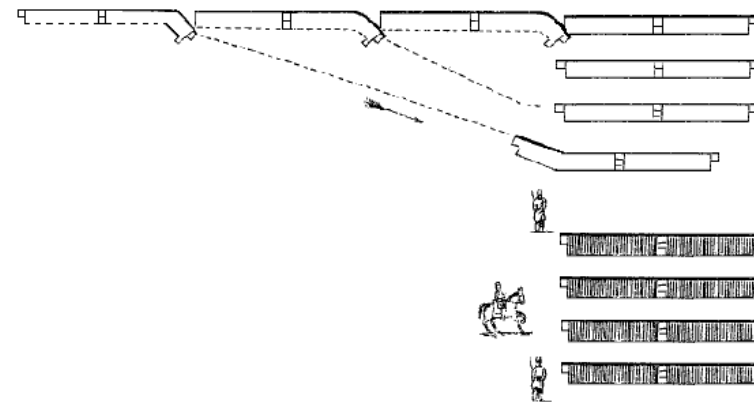


Deployment of the Double Column, Faced to the Front.

H 796 / C 946-955 / G 360 / D 132-134 / p. 39 herein

1. *Deploy column.* 2. *Battalion, outwards - FACE.*
3. *MARCH (or double quick - MARCH).*

The column will deploy itself on the two companies at its head, according to the principles prescribed for the deployment of columns at half distance or closed in mass. (See, previous illustrations.)



To Ploy the Battalion into Close Column.

H 117 / C 157 / G 303 / D 47 / p. 41 herein

1. *Close column, by company (or by division).*
2. *On the first company (or division), right in front.*
3. *Battalion, right - FACE.* 4. *MARCH (or double quick - MARCH).*

The battalion will form the column of companies or divisions by facing to the right, breaking ranks as described and shown in previous illustrations, then forming behind the first company or division as designated by the colonel.

- SOURCES -

Casey, Brig. Gen. Silas, *Infantry Tactics*; Vol. I : *Schools of the Soldier and Company* (1863) ; Vol. II : *School of the Battalion* (1862) ; Vol. III: *Evolutions of a Brigade and Corps D'Armee* (1862), New York: D. Van Nostrand

Coppee, Capt. Henry, *The Field Manual for Battalion Drill* ; Philadelphia, J.B. Lippincott & Co. (1862)

Confederate States, War Dept., *Regulations for the Army of the Confederate States*, Richmond, VA : J.W. Randolph (1863)

DalBello, Dominic J., *Parade, Inspection and Basic Evolutions of the Infantry Battalion*; Santa Barbara, California : AoP Press (4th Ed., 1998)

Gilham, Maj. William, *Manual of Instruction for the Volunteers and Militia of the United States*; Philadelphia: Charles DeSilver, Cushings & Bailey, Baltimore (1861)

Hardee, Brig. Gen. William J., *Rifle and Infantry Tactics, Revised and Improved*, Mobile: S. H. Goetzel (1863)

LeGal, Col. Eugene, *School of the Guides : Designed for the Use of the Militia of the United States*, New York : D. Van Nostrand (1862)

Monroe, Col. James, *The Company Drill of the Infantry of the Line*, New York D. Van Nostrand (1863)

Morris, Brig. Gen. William Hopkins, Vol. I : *Comprising the School of the Soldier; School of the Company; Instruction for Skirmishers* ; Vol. II : *School of the Battalion; Evolutions of the Brigade; and Directions for Manœuvring the Division and the Corps D'Armee* New York D. Van Nostrand (1865)

Scott, Maj. Gen. Winfield, *Infantry Tactics : Vol. III : Evolutions of the Line*, New York : Harper & Brothers (New Edition : 1861)

Tackitt, Col. Mark (Silas), *Guides Posts*, Seattle, Washington (2005)

United States, War Dept., *U.S. Infantry Tactics. For the Instruction, Exercise, and Manœuvres of the United States Infantry, Including Infantry of the Line, Light Infantry, and Riflemen.* (1861)

The abbreviations for citations are: H = Hardee's Revised; G = Gilham's; C = Casey's; D = Dal Bello. The format used always places Hardee's manual first, then Casey, then Gilham, then some other manual. Sometimes, none of these period manuals applies. Here's how the system works. For oblique alignments found in the School of the Soldier, the citation reads:

Ploy Battalion into Close Column H 117 / C 157 / G 303 / D 47

This topic can be found at paragraph 117 in School of the Battalion of Revised Hardee (HC); paragraph 157 in the School of the Battalion in Casey ; paragraph 303 of Gilham's (G); and paragraph 47 of DalBello.

THE FIRINGS - p. 1

Battalion Firing H 38-50 / C 39-56 / G 299 / D 176-183

ASSEMBLY AND PARADE - p. 4

Assembly of the Battalion C.S. Reg's 324 / G 297, 737 / D184-D186

Dress Parade C.S. Reg's 326 / G 738 / D10-D22

LINE INTO COLUMN - p. 7

By Company Right Wheel H 68 / C 77 / G 300 / D 42 - D 24

Break to the Right to March to the Left H 86 / G 300, 307 / D 65

By the Right of Companies to the Rear into Column.
 H 87, 90, 96 / C 108, 112, 121 / G 301 / D 43-D45

COLUMN INTO LINE - p. 10

Forward into Line H 440 / G 329 / D 87

Column at Half Distance, Forward into Line of Battle
 H 508 / C 530 / G 337 / D 93

Column in Mass, Forward into Line of Battle
 H 514 / C 559 / G 339 / D 95

Left into Line Wheel H 390 / C 464 / G 323 / D 80

On the Right into Line H 414 / C 502 / G 328 / D 83 - 84

By Inversion, Right into Line H 407 / C 484 / G 326 / D 85

FLANKS INTO COLUMN - p. 20

By Companies into Line H 113 / C 151 / G / D 41

FLANKS INTO LINE - p. 21

On the Right by File into Line H 735 / C 820 / G 354 / N/A

To Form Forward into Line from Fours Vol. 2 Morris, p. 28

To Form Line from Advance by the Right of Companies . *Vol. 2 Morris, pp. 32*

LINES IN RETREAT - p. 22

To March in Retreat in Line of Battle. H 664 / C 730 / G 345 / D 106

By the Right of Companies to the Rear H 105, 113 / C 135, 150 / D 119

To Form Line of Battle *Vol. 2 Morris, p. 50*

To Retreat by Alternate Companies . . . Vol. III, Casey 688 / Vol. III, Scott 2529

COLUMN IN ROUTE THROUGH DEFILES - p. 26

The Column in Route H 198 / C 239 / D 74 / Coppee, SoB p. 30

CHANGING THE LENGTH OF THE COLUMN - p. 28

By Head of Column Take Wheeling Distance . . . H 323 / C 106 / G 313 / D 56

Close Column to Half-distance H 252 / C 294 / G 309 / D 52

MANŒUVRING LINES OF BATTLE - p. 30

To Advance in Line of Battle H 587 / C 648 / G 343 / D 100

To Halt the Battalion, and to Align It - (*Guides on the line*).
. H 635 / C 699 / G 344 / D 104, 151

Change Front Forward on the First Company . . . H 743 / C 830 / G 355 / D 109

Change Front to the Rear on the First Company . H 761 / C 852 / G 357 / D112

PLOYING AND DEPLOYING DIVISIONS - p. 37

Form Division from Column H 380 / C 453 / G 318 / D 70

Form Column Doubled on Center
. *H 777-794 / C 875-898 / G 358 / D 124-131*

Deploy Double Column Forward into Line
. *H 792-802 / C 946-955 / D 132-134*

Close Column By Company or By Division H 117 / C 157 / G 303 / D 47

SUMMARY OF THE INDEX

THE FIRINGS p. 1

ASSEMBLY AND PARADE p. 4

LINE INTO COLUMN p. 7

COLUMN INTO LINE p. 10

FLANKS INTO COLUMNS p. 20

FLANKS INTO LINE p. 21

LINES IN RETREAT p. 22

THE COLUMN IN ROUTE THROUGH DEFILES . . . p. 26

CHANGING THE LENGTH OF THE COLUMN p.28

MANŒUVRING LINES OF BATTLE p. 30

PLOYING AND DEPLOYING DIVISIONS p. 37

ILLUSTRATIONS pp. 44 - 62