
SUMMARY OF THE INDEX

THE FIRINGS p. 1

ASSEMBLY AND PARADE p. 4

LINE INTO COLUMN p. 7

COLUMN INTO LINE p. 10

FLANKS INTO COLUMNS p. 20

FLANKS INTO LINE p. 21

LINES IN RETREAT p. 22

THE COLUMN IN ROUTE THROUGH DEFILES .. p. 26

CHANGING THE LENGTH OF THE COLUMN p.28

MANŒUVRING LINES OF BATTLE p. 30

PLOYING AND DEPLOYING DIVISIONS p. 37

ILLUSTRATIONS pp. 44 - 62

Revised

Manual

of Suggested

Battalion Drill

for the

Army of Tennessee

Formerly known
as the
First Confederate Division
of the
North South Alliance

2d Edition

Major General Mike Moore,
Commanding

Manual Prepared and Compiled
by
Major Silas Tackitt,
Assistant Inspector General, AoT

THE FIRINGS - p. 1

Battalion Firing *H 38-50 / C 39-56 / G 299 / D 176-183*

ASSEMBLY AND PARADE - p. 4

Assembly of the Battalion C.S. Reg's 324 / G 297, 737 / D184-D186

Dress Parade C.S. Reg's 326 / G 738 / D10-D22

LINE INTO COLUMN - p. 7

By Company Right Wheel *H 68 / C 77 / G 300 / D 42 - D 24*

Break to the Right to March to the Left H 86 / G 300, 307 / D 65

By the Right of Companies to the Rear into Column.
. H 87, 90, 96 / C 108, 112, 121 / G 301 / D 43-D45

COLUMN INTO LINE - p. 10

Forward into Line *H 440 / G 329 / D 87*

Column at Half Distance, Forward into Line of Battle
. H 508 / C 530 / G 337 / D 93

Column in Mass, Forward into Line of Battle
. H 514 / C 559 / G 339 / D 95

Left into Line Wheel H 390 / C 464 / G 323 / D 80

On the Right into Line H 414 / C 502 / G 328 / D 83 - 84

By Inversion, Right into Line H 407 / C 484 / G 326 / D 85

FLANKS INTO COLUMN - p. 20

By Companies into Line *H 113 / C 151 / G / D 41*

FLANKS INTO LINE - p. 21

On the Right by File into Line *H 735 / C 820 / G 354 / N/A*

To Form Forward into Line from Fours *Vol. 2 Morris, p. 28*

THE FIRINGS

H 31-67 / C 39-56 / G 299 / D 176-183 / see illustration, p. 44.

Loading at will, and the Firings.

31. The colonel will next cause to be executed loading at will, by the commands prescribed in school of the company, No. 45 ; the officers and sergeants in the ranks will half face to the right with the men at the eighth time of loading, and will face to the front when the men next to them come to a shoulder.

32. The colonel will cause to be executed the *fire by company*, the *fire by wing*, the *fire by battalion*, the *fire by file*, and the *fire by rank*, by the commands to be herein indicated.

33. The *fire by company* and the *fire by file* will always be *direct* ; the *fire by battalion*, the *fire by wing*, and the *fire by rank*, may be either *direct* or *oblique*.

34. When the fire ought to be *oblique*, the colonel will give, at every round, the caution, *right* (or *left*) *oblique*, between the commands, *ready* and *aim*.

35. The fire by company will be executed alternately by the right and left companies of each division, as if the division were alone. The right company will fire first ; the captain of the left will not give his first command till he shall see one or two pieces at a ready in the right company ; the captain of the latter, after the first discharge, will observe the same rule in respect to the left company ; and the fire will thus be continue alternately.

36. The colonel will observe the same rule in the firing by wing.

37. The fire by file will commence in all the companies at once, and will be executed as has been prescribed in the school of the company, No. 55 and following. The fire by rank will be executed by each rank alternately, as has been prescribed in the school of the company, No. 58 and following.

38. The color-guard will not fire, but reserve itself for the defense of the color.

The fire by company.

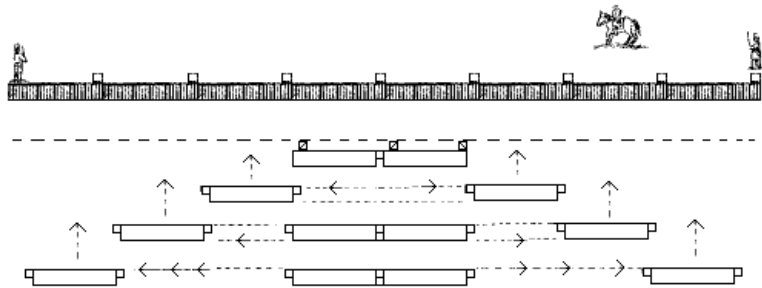
39. The colonel, wishing the fire by company to be executed, will command :

1. *Fire by company.* 2. *Commence firing.*

40. At the first command, the captains and covering sergeants will take the positions indicated in the school of the company, No. 49.

41. The color and its guard will step back at the same time, so as to bring the front rank of the guard in a line with the rear rank of the battalion. *This rule is general for all the different firings.*

42. At the second command, the odd numbered companies will commence to fire ; their captains will each give the commands prescribed in the school of the company, No. 50, observing to precede the command, *company*, by

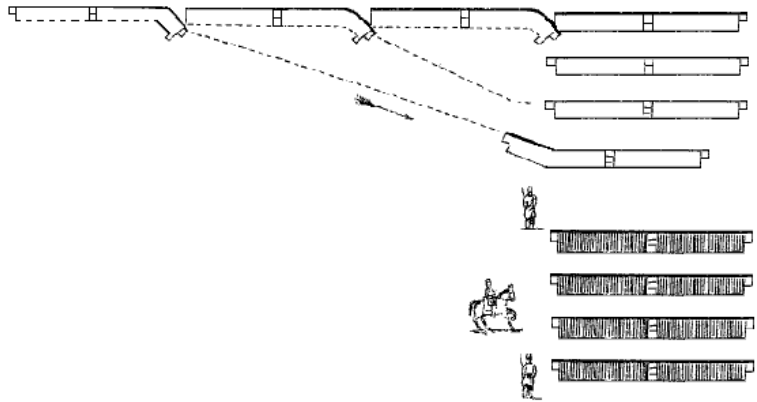


Deployment of the Double Column, Faced to the Front.

H 796 / C 946-955 / G 360 / D 132-134 / p. 39 herein

1. *Deploy column.* 2. *Battalion, outwards - FACE.*
3. *MARCH* (or *double quick - MARCH*).

The column will deploy itself on the two companies at its head, according to the principles prescribed for the deployment of columns at half distance or closed in mass. (See, previous illustrations.)



To Ploy the Battalion into Close Column.

H 117 / C 157 / G 303 / D 47 / p. 41 herein

1. *Close column, by company* (or *by division*).
2. *On the first company* (or *division*), *right in front.*
3. *Battalion, right - FACE.* 4. *MARCH* (or *double quick - MARCH*).

The battalion will form the column of companies or divisions by facing to the right, breaking ranks as described and shown in previous illustrations, then forming behind the first company or division as designated by the colonel.

4. *Rear rank.* 5. *AIM.* 6. *FIRE.* 7. *LOAD.*

52. This fire will be executed as has been explained in the school of the company, No. 59, in following the progression prescribed for the two ranks which should fire alternately.

The fire by the rear rank.

53. When the colonel shall wish the battalion to fire to the rear, he will command :

1. *Face by the rear rank.* 2. *Battalion.* 3. *About - FACE*

54. At the first command, the captains, covering sergeants, and file closers will execute what has been prescribed in the school of the company, No. 69 ; the color-bearer will pass into the rear rank, and for this purpose, the corporal of his file will step before the corporal next on his right to let the color-bearer pass, and will then take his place in the front rank ; the lieutenant colonel, adjutant, major, sergeant major, and the music will place themselves before the front rank, and face to the rear, each opposite his place in the line of battle, the first two passing around the right, and the others around the left of the battalion.

55. At the third command, the battalion will face about ; the captains and covering sergeants observing what is prescribed in the school of the company, No. 70.

56. The battalion facing thus by the rear rank, the colonel will cause it to execute the different fires by the same commands as if it were faced by the front rank.

57. The right and left wings will retain the same designations, although faced *about* ; the companies also will preserve their former designations, as *first, second, third, &c.*

58. The fire by file will commence on the left of each company, now become the right.

59. The fire by rank will commence by the front rank, now become the rear rank. This rank will preserve its denomination.

60. The captains, covering sergeants, and color-guard will, at the first command given by the colonel, take the places prescribed for them in the fires, with the front rank leading.

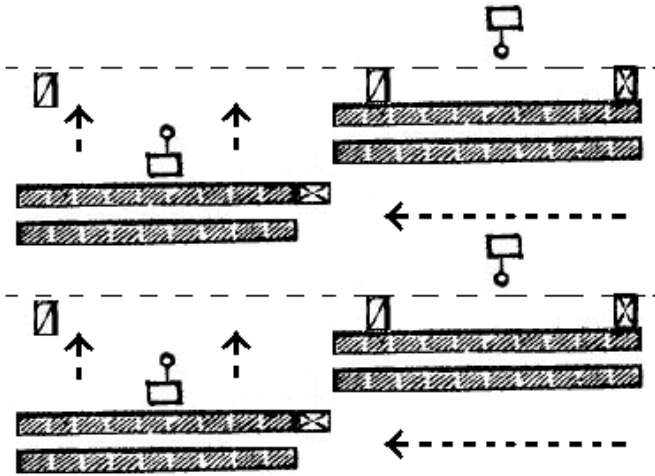
61. The colonel, after firing to the rear, wishing to face the battalion to its proper front, will command :

1. *Face by the front rank.* 2. *Battalion.* 3. *About - FACE.*

62. At these commands, the battalion will return to its proper front by the means prescribed, Nos. 54 and 55.

63. The fire by file being that most used in war, the colonel will give it the preference in the preparatory exercises, in order that the battalion may be brought to execute it with the greatest possible regularity.

64. When the colonel may wish to give some relaxation to the battalion, without breaking the ranks, he will execute what has been prescribed in the school of the company, Nos. 37 and 38 or Nos. 39 and 40.



**Being in Column of Companies at Full or Half Distance
To Form Divisions.**

H 364 / C 438 & 453 / G 318 / D 70 / p. 37 herein

From a column of companies, right in front, the colonel orders :

1. *Form divisions.* 2. *Left companies, left - FACE.*
3. *MARCH* (or *double quick - MARCH*).

The right companies and their captains stand fast ; but the right and left guides of each of these companies will place themselves respectively before the right and left files of the company, both guides facing to the right, and each resting his right arm gently against the breast of the front rank man of the file, in order to mark the direction.

The left companies only will put themselves in march, their captains standing fast. When his company nearly clears the column, he commands :

1. *Such company.* 2. *HALT.* 3. *FRONT.*

The first command will be given when the company shall yet have four paces to march ; the second at the instant it shall have cleared its right company; and the third immediately after the second.

The left captains will place themselves before the centre of their companies.

1. *Such company, forward.* 2. *Guide right.* 3. *MARCH.*

The left captains will halt and dress onto the right companies. If the companies are in closed column, as shown, they will dress without marching forward.

left and right in succession, and when the formation is complete, the adjutant commands,

Guides - POSTS ;

at this command, the guides on the line retire to their places by passing through the intervals between the companies, and those captains who are on the left of their companies, shift to the right.

Dress Parade

G 738 / D 10, 22 / CS Regulations 326

[C.S. Regulations 326.] When the line is formed, the Captain of the first company, on notice from the Adjutant, steps one pace to the front, and gives to his company the command,

"Order - ARMS! Parade - REST!"

which is repeated by each Captain in succession to the left. The Adjutant takes post two paces on the right of the line ; the Sergeant-major two paces on the left. The music will be formed in two ranks on the right of the Adjutant. The senior officer present will take the command of the parade, and will take post at a suitable distance in front, opposite the centre, facing the line.

327. When the companies have ordered arms, the Adjutant will order the music to beat off, when it will commence on the right, beat in front of the line to the left, and back to its place on the right.

328. When the music has ceased, the Adjutant will step two paces to the front, face to the left, and command,

1. *Attention!* 2. *Battalion.* 3. *Shoulder - ARMS!*
4. *Prepare to open ranks!* 5. *To the rear, open order!* 6. *MARCH!*

At the sixth command, the ranks will be opened according to the system laid down in the Infantry Tactics, the commissioned officers marching to the front, the company officers four paces, field officers six paces, opposite to their positions in the order of battle, where they will halt and dress. The Adjutant, seeing the ranks aligned, will command,

FRONT!

and march along the front to the centre, face to the right, and pass the line of company officers eight or ten paces, where he will come to the right-about, and command,

Present - ARMS!

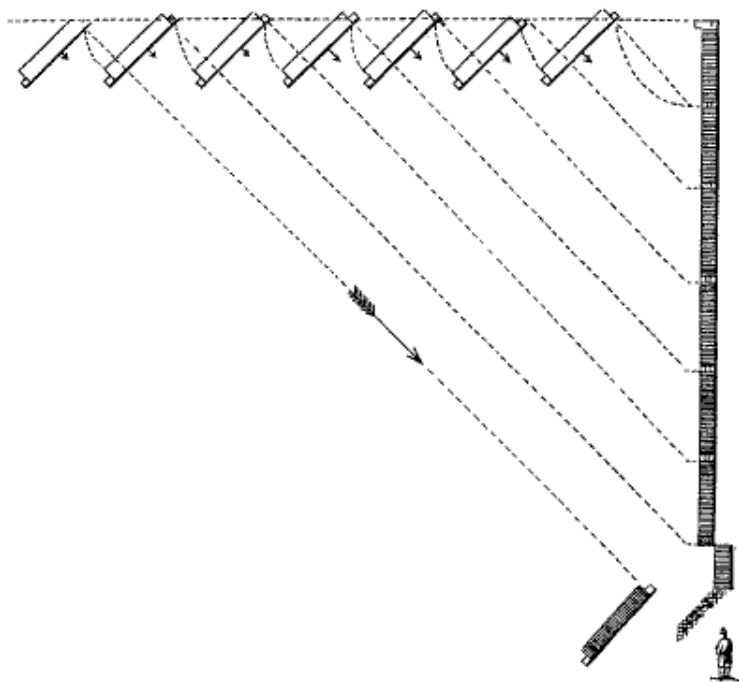
when arms will be presented, officers saluting.

329. Seeing this executed, he will face about to the commanding officer, salute, and report,

"Sir, the parade is formed."

The Adjutant will then, on intimation to that effect, take his station three paces on the left of the commanding officer, one pace retired, passing round his rear.

330. The commanding officer, having acknowledged the salute of the line by touching his hat, will, after the Adjutant has taken his post draw his sword, and



Change of Front Perpendicularly to the Rear.

H 760 / C 852 / G 357 / D 112 / p. 36 herein

The captain of the right company about faces his company and performs a fixed pivot wheel to the left onto the new line as designated by the colonel. The captain then sets markers on the new line for the benefit of the subsequent companies.

The colonel then commands :

1. *Change front to the rear, on first company.* 2. *Battalion, about - FACE.*
3. *By company, left half wheel.* 4. *MARCH (or double quick - MARCH).*

The colonel next commands :

5. *Forward.* 6. *MARCH.* 7. *Guide left.*

Each captain commands independently :

Left turn - MARCH.

The companies cross the new line of battle and halt beyond the line. The captains about face their companies and dress to the right onto the new line of battle.

extraordinary and urgent occasions.

LINE INTO COLUMN

To Break to the Right or the Left into Column.

H 68 / C 77 / G 300 / D 42 & D 24 / illustration p. 45

68. Lines of battle will habitually break into column by company ; they may also break by division or by platoon.

69. It is here supposed that the colonel wishes to break by company to the right ; he will command :

1. *By company, right wheel.* 2. *MARCH (or double quick - MARCH).*

70. At the first command, each captain will place himself rapidly before the centre of his company, and caution it that it has to wheel to the right ; each covering sergeant will replace his captain in the front rank.

71. At the command, *march*, each company will break to the right, according to the principles prescribed in the school of the company, No. 173 ; each captain will conform himself to what is prescribed for the chiefs of platoon ; the left guide, as soon as he can pass, will place himself on the left of the front rank to conduct the marching flank, and when he shall have approached near to the perpendicular, the captain will command :

1. *Such company.* 2. *HALT.*

72. At the second command, which will be given at the instant the left guide shall be at the distance of three paces from the perpendicular, the company will halt ; the guide will advance and place his left arm lightly against the breast of the captain, who will establish him on the alignment of the man who has faced to the right ; the covering sergeant will place himself correctly on the alignment on the right of that man ; which being executed, the captain will align his company by the left, command,

FRONT,

and place himself two paces before its centre.

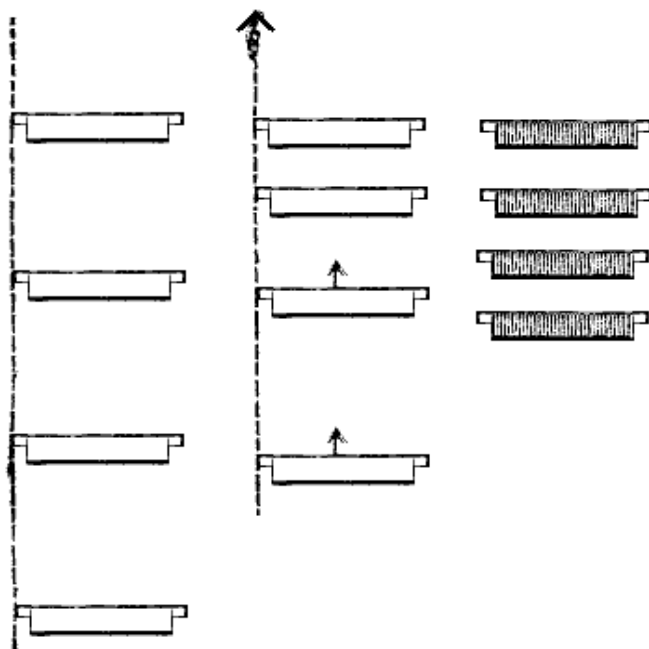
73. The captains having commanded,

FRONT,

the guides, although some of them may not be in the direction of the preceding guides, will stand fast, in order that the error of a company that has wheeled too much or too little may not be propagated ; the guides not in the direction will readily come into it when the column is put in march.

74. A battalion in line of battle will break into column by company to the left, according to the same principles ; and by inverse means ; the covering sergeant of each company will conduct the marching flank, and the left guide will place himself on the left of the front rank at the moment the company halts.

78. The battalion being in column, the lieutenant colonel and major will place themselves on the directing flank, the first abreast with the leading



To Close the Column to Half Distance, or in Mass.

H 252 / C 294 / G 309 / D 52 / p. 29 *herein*

The colonel commands :

1. *To half distance, close column.*
2. MARCH (or *double quick - MARCH*).

The command, *march*, is repeated by all the captains, except the captain of the leading company.

All the other companies will march, and as each in succession arrives at platoon distance from the one which precedes, its captain will halt it.

At the instant that each company halts, its guide will place himself on the direction of the guides who precede.

As soon as the battalion is broken, the lieutenant colonel will place a marker abreast with the right guide of the leading company. The instant the column is put in motion, this company will wheel to the left (or right) march ten paces to the front without changing the guide, and wheel again to the left (or right). The second wheel being completed, the captain will immediately command, *guide left* (or *right*). The guide of this company will march in a direction parallel to the guides of the column. The lieutenant colonel will be careful to place a second marker at the point where the first company is to change direction the second time.

**To Break to the Rear, by the Right or Left, into Column,
And to Advance or Retire by the Right or Left of Companies.**

H 87, 105 / C 108, 135 / G 301 / D 43-45 / illustrations p. 46 - 47

87. When the colonel shall wish to cause the battalion to break to the rear, by the right, into column by company, he will command :

1. *By the right of companies to the rear into column.*
2. *Battalion, right - FACE.* 3. MARCH (or *double quick - MARCH*).

88. At the first command, each captain will place himself before the centre of his company, and caution it to face to the right ; the covering sergeants will step into the front rank.

89. At the second command, the battalion will face to the right ; each captain will hasten to the right of his company, and break two files to the rear ; the first will break the whole depth of the two ranks ; the second file less ; which being executed, the captain will place himself so that his breast may touch lightly the left arm of the front rank man of the last file in the company next on the right of his own. The captain of the right company will place himself as if there were a company on his right, and will align himself on the other captains. The covering sergeant of each company will break to the rear with the right files, and place himself before the front rank of the first file, to conduct him.

90. At the command, *march*, the first file of each company will wheel to the right ; the covering sergeant, placed before this file, will conduct it perpendicularly to the rear. The other files will come successively to wheel on the same spot. The captains will stand fast, see their companies file past, and at the instant the last file shall have wheeled, each captain will command :

1. *Such company.* 2. HALT. 3. FRONT. 4. *Left - DRESS.*

91. At the instant the company faces to the front, its left guide will place himself so that his left arm may touch lightly the breast of his captain.

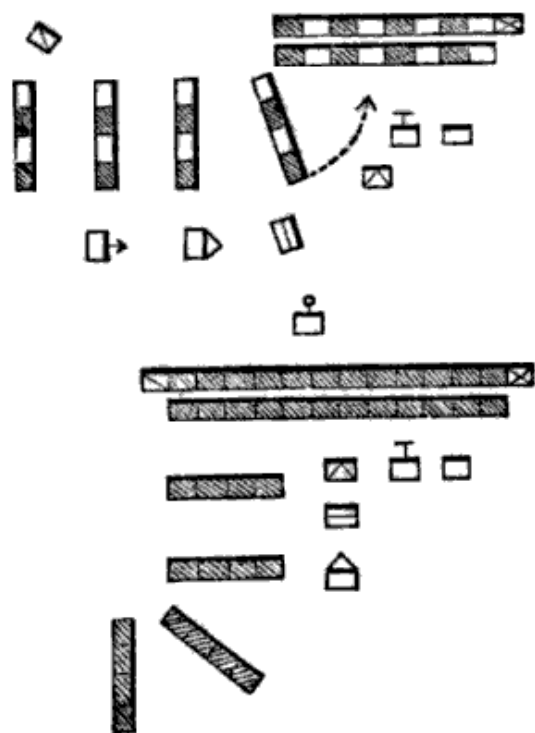
92. At the fourth command, the company will align itself on its left guide, the captain so directing it, that the new alignment may be perpendicular to that which the company had occupied line of battle, and, the better to judge this, he will step back two paces from the flank.

93. The company being aligned, the captain will command :

FRONT,

and take his place before its centre.

98. To break to the rear by the left, the colonel will give the same



To Break Files to the Rear, and to Bring Them Again into Line.

HB 198, HS 289 / CB 239, CS 294 / G 251 / D 74 / p. 26 *herein*

Files are to be so broken that, whereas they were marching by the front, they shall be marching in the same direction by the flank. The files broken off double and gain the rear of the nearest files that continue in line. Apply to these files what is normally performed at the commands, 1. *By the right* (or *left*) *flank*. 2. *By file left* (or *right*.) The captain commands :

1. *Two files from left* (or *right*) *to rear*. 2. MARCH.

Two files on the left (or right) of the company will face to the right (or left) and double while the others will continue to march straight-forward. The left (right) guide closes in to the flank. The company front may be diminished by breaking off successive groups of two files, but the new files must always be broken from the same side.

To cause broken files broken to return into line, the captain commands:

1. *Two files into line*. 2. MARCH.

The designated files come into line, precisely as files do when the command is, *By company into line*.

direction indicated.

415. The first marker will be placed at the point of *appui* for the right front rank man of the leading company ; the second will indicate the point where one of the three left files of the same company will rest when in line ; they will be placed so as to present the right shoulder to the battalion when formed.

416. These dispositions being made, the colonel will command [440] :

1. *Forward into line*.
2. *By company, left half wheel*. 3. MARCH (or *double quick* - MARCH).

441. At the first command, the captain of the leading company will add:

Guide right,

put the company in march, halt it three paces from the markers, and align it against the latter by the right.

442. At the command, *march*, all the other companies will wheel to the left on fixed pivots ; and, at the instant the colonel shall judge, according to the direction of the line of battle, that the companies have sufficiently wheeled, he will command :

4. *Forward*. 5. MARCH. 6. *Guide right*.

443. At the fifth command, the companies, ceasing to wheel, will march straight forward ; and at the sixth, the men will touch elbows towards the right. The right guide of the second company, who is nearest to the line of battle, will march straight forward ; each succeeding right guide will follow the file immediately before him at the cessation of the wheel.

444. The second company having arrived opposite to the left file of the first, its captain will cause it to turn to the right, in order to approach the line of battle ; and when its right guide shall be at three paces from that line, the captain will command :

1. *Second company*. 2. HALT.

445. At the second command, the company, will halt ; the files not yet in line with the guide will come into it promptly, the left guide will place himself on the line of battle, so as to be opposite to one of the three files on the left of the company ; and, as soon as he is assured on the direction by the lieutenant colonel, the captain, having placed himself accurately on the line of battle, will command:

3. *Right* - DRESS.

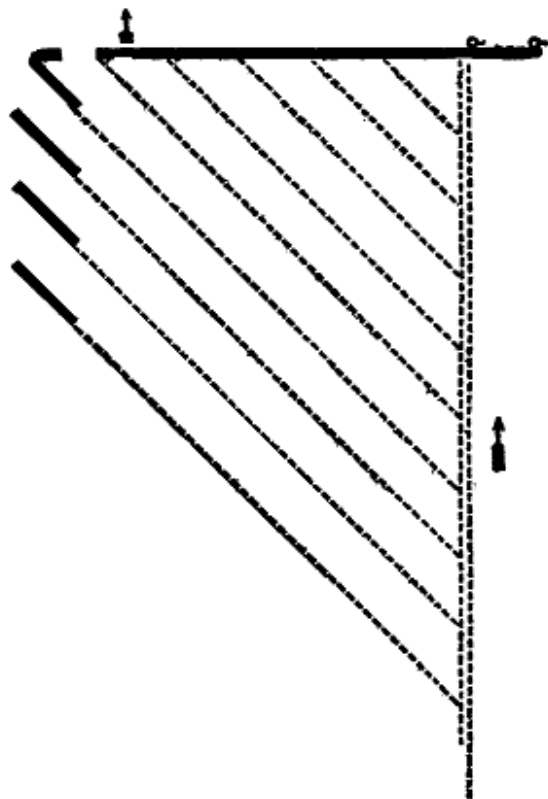
446. At the instant that the guide of the second company begins to turn to the right, the guide of the third, ceasing to follow the file immediately before him, will march straight forward ; and, when he shall arrive opposite to the left of the second, his captain will cause the company to turn to the right, in order to approach the line of battle, halt it at three paces from that line, and align it by the right, as prescribed for the second company.

447. Each following company will execute what has just been prescribed for the third, as the preceding company shall turn to the right, in order to approach the line of battle.

448. The formation ended, the colonel will command :

Guides - POSTS.

449. The colonel and lieutenant colonel will observe in this formation,



To Form Forward into Line of Battle from Fours

Vol. 2 Morris (SoB) p. 28 / p. 21 herein

From a column of fours, right in front, marching or at a halt, the colonel commands :

1. *Forward into line.* 2. *By the right of companies to the front.* 3. MARCH.

The leading captain files his company right and halts it when it has marched the length of its front ; he faces it to the front, and dresses it to the right.

Each captain will conduct his companies by the flank over the shortest line towards the point on the line of battle where his left will rest ; and having arrived within three paces behind the line, each will command :

1. *By file right.* 2. MARCH.

The left guide will throw himself on the line of battle. Each captain will finish the movement by the commands :

1. (*Such*) *company.* 2. HALT. 3. FRONT. 4. *Right* - DRESS. 5. FRONT.

Column at Half Distance, Forward into Line of Battle.

H 508 / C 530 / G 337 / D 93

508. If it be wished to form a column at half distance, forward into line of battle, the colonel will first cause it to close in mass and then deploy it on the leading company.

Column in Mass, Forward into Line of Battle.

H 514 / C 559 / G 339 / D 95 / illustration p. 49

511. When a column in mass, by company arrives behind the line on which it is intended to deploy it, the colonel will indicate, in advance, to the lieutenant colonel, the direction of the line of battle, as well as the point on which he may wish to direct the column. The lieutenant colonel will immediately detach himself with two markers, and establish them on that line, the first at the point indicated, the second a little less than the front of a division from the first.

512. Deployments will always be made upon lines parallel, and lines perpendicular to the line of battle ; consequently, if the column be in march, he will so direct it that it may arrive exactly behind the markers, perpendicularly to, and halt it at three paces from the line of battle.

513. The column, right in front, being halted, it is supposed that the colonel wishes to deploy it on the first company ; he will order the left general guide to go to a point on the line of battle a little beyond that at which the left of the battalion will rest when deployed, and place himself correctly on the prolongation of the markers established before the first company.

514. These dispositions being made, the colonel will command :

1. *On the first company, deploy column.* 2. *Battalion, left* - FACE.

515. At the first command, the chief of the first company will caution it to stand fast ; the chiefs of the other companies will remind them that they will have to face to the left.

516. At the second command, the remaining companies will face to the left ; the chief of each will place himself by the side of its left guide.

517. At the same command, the lieutenant colonel will place a third marker on the alignment of the two first, opposite to one of the three left files of the first company, and then place himself on the line of battle a few paces.

518. The colonel will then command :

3. MARCH (or *double quick* - MARCH).

519. At this command, the chief of the first company will go to its right, and command :

Right - DRESS.

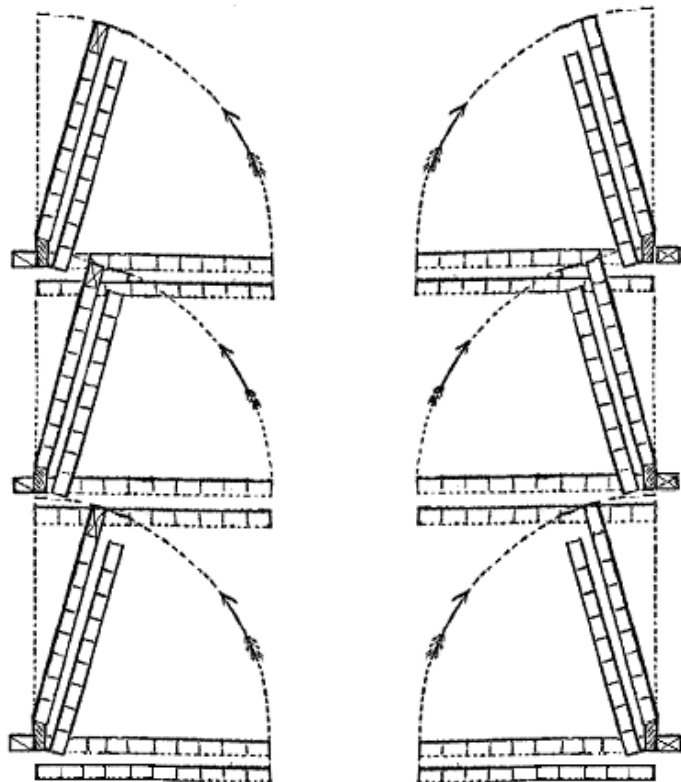
520. At this, the company will dress up against the markers ; the chief of the company will align the company, and then command :

FRONT.

521. The remaining companies, faced to the left, will put themselves in march ; the left guide of the second will direct himself parallel to the line of battle;

Column at Full Distance, Right in Front, to the Left into Line of Battle.

H 390 / C 464 / G 323 / D 80 / illustration p. 50



Left into Line, Wheel
p. 15

*By Inversion,
Right into Line, Wheel* - p. 19

1. *Left into line, wheel.* 2. MARCH (or *double quick* - MARCH).
H 390 / C 464 / G 323 / D 80 / **p. 15 herein**

and

1. *By inversion, right into line, wheel.* 2. *Battalion, guide right.*
Then :
3. MARCH (or *double quick* - MARCH).
H 407 / C 484 / G 326 / D 85 / **p. 19 herein**

390. A column, right in front, being at a halt, when the colonel shall wish to form it to the left into line, he will assure the positions of the guides by the means previously indicated, and then command :

1. *Left into line, wheel.* 2. MARCH (or *double quick* - MARCH).

391. At the first command, the right guide of the leading company will hasten to place himself on the direction of the left guides of the column, face to them, and place himself so as to be opposite to one of the three right files of his company, when they shall be in line : he will be assured this position by the lieutenant colonel.

392. At the command, *march*, briskly repeated by the captains, the left front rank man of each company will face to the left, and rest his breast lightly against the right arm of his guide ; the companies will wheel to the left on the principle of wheeling from a halt, conforming themselves to what is prescribed, school of the company, No. 239 ; each captain will turn to his company, to observe the execution of the movement, and, when the right of the company shall arrive at three paces from the line of battle, he will command :

1. *Such company.* 2. HALT.

393. The company being halted, the captain will place himself on the line by the side of the left front rank man of the company next on the right, align himself correctly, and command :

3. *Right* - DRESS.

394. At this command, the company will dress up between the captain and the front rank man on its left, the captain directing the alignment on that man; the front rank man on the right of the right company, who finds himself opposite to its right guide, will lightly rest his breast against the left arm of this guide.

395. Each captain, having aligned his company will command,
FRONT,

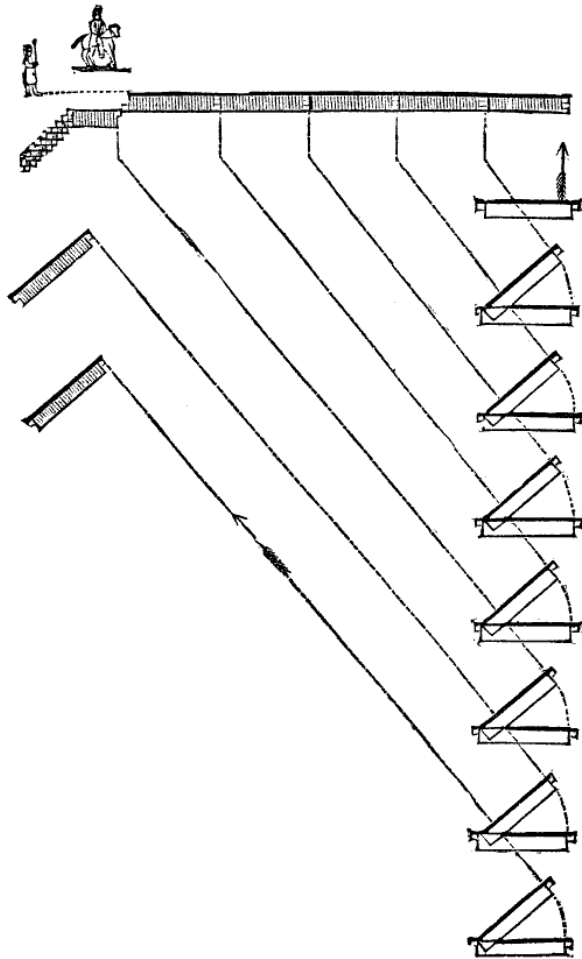
and the colonel will add :

Guides - POSTS.

396. At this command, the guides will return to their places in line of battle, each passing through the nearest captain's interval ; to permit him to pass, the captain will momentarily step before the first file of his company, and the covering sergeant behind the same file. *This rule is general for all formations into line of battle.*

397. When companies form line of battle, file closers will always place themselves exactly two paces from the rear rank, which will sufficiently assure their alignment.

398. The battalion being correctly aligned, the colonel, lieutenant colonel, and major, as well as the adjutant and sergeant major, will return to their respective places in line of battle. *This rule is general for all the formations into line of battle;* nevertheless, the battalion being in the school of elementary instruction, the colonel will go to any point he may deem necessary.



Column at full distance, forward into line of battle.

H 440 / G 329 / D 87 / p. 10 herein

The colonel commands :

1. *Forward into line.* 2. *By company, left half wheel.*
3. MARCH (or *double quick - MARCH*).

Then :

4. *Forward.* 5. MARCH. 6. *Guide right.*

Each captain commands independently :

Right turn - MARCH.

The companies dress independently onto the line of battle.

419. At the command, *march*, the company will turn to the right ; the right guide will so direct himself as to bring the man next to him opposite to the right marker, and when at three paces from him, the captain will command :

1. *First company.* 2. HALT.

420. At the second command, the company will halt ; the files, not yet in line, will form promptly ; the left guide will retire as a file closer ; and the captain will then command :

3. *Right - DRESS.*

421. At this command, the company will align itself ; the two men who find themselves opposite to the two markers, will each lightly rest his breast against the right arm of his marker ; the captain, passing to the right of the front rank, will direct the alignment on these two men. *These rules are general for all successive formations.*

422. The second company will continue to march straight forward ; when arrived opposite to the left flank of the preceding company, it will turn to the right, and be formed on the line of battle, as his just been prescribed ; the right guide will direct himself so as to come upon that line by the side of the man on the left of the first company.

423. At the distance of three paces from the line of battle, the company will be halted by its captain, who will place himself briskly by the side of the man on the left of the preceding company, and align himself correctly on its front rank.

424. The left guide will, at the same time, place himself before one of the three left files of his company, and, facing to the right, he will place himself accurately on the direction of the two markers of the preceding company.

425. The captain will then command :

Right - DRESS.

426. At this command, the second company will dress forward on the line; the captain direct its alignment on the front rank man who has rested his breast against the left guide of the company.

427. The following companies will thus come successively to form themselves on the line of battle, each conforming itself to what has just been prescribed for the one next to the right ; and when they shall all be established, the colonel will command :

Guides - POSTS.

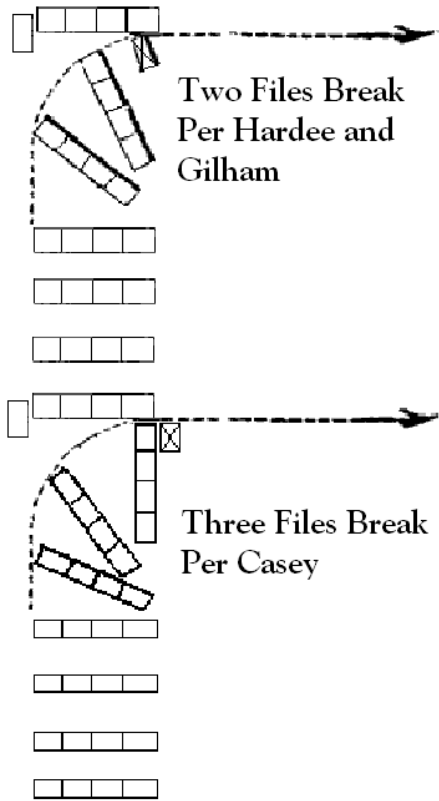
428. At this command, the guides will take their places in line of battle, and the markers placed before the right company will retire.

429. If the column be marching in quick time, and the colonel should wish to cause the movement to be executed in double quick time, he will add the command :

Double quick - MARCH.

At the command, *march*, all the companies will take the double quick step, and the movement will be executed as prescribed, No. 417, and following.

430. The colonel will follow up the formation, passing along the front, and being always opposite to the company about to turn it is thus that he will be the better able to see and to correct the error that would result from a command



company is the first in line of battle ; this captain will immediately place himself behind the centre of his company, and as soon as the next captain shall have commanded, *front*, he will commence the fire by file, by the commands prescribed, school of the company. At the command, *fire by file*, the marker at the outer file of this first company will retire, and the other will place himself against the nearest man of the next company. The captain of the latter will commence firing as soon as the captain of the third company, in line, shall have commanded, *front* ; the marker before the nearest file of the second company, in line, will now retire, and the guide before the opposite flank will place himself before the nearest file of the third company, in line, and so on, in continuation, to the last company on the left or right of the battalion, according as the formation may have commenced with the right or left in front.

439. In all the successive formations, the same principles will be observed for the execution of the fire by file. This fire will always be executed by the command of each captain of company.

By Inversion to the Right (Or Left) into Line of Battle.

H 407 / C 484 / G 326 / D 85 / illustration p. 50

407. When a column, right in front, shall be under the necessity of forming itself into line faced to the reverse flank, and the colonel shall wish to execute this formation by the shortest movement, he will command :

1. *By inversion, right into line, wheel.*
2. *Battalion, guide right.*

408. At the first command, the lieutenant colonel will place himself in front, and facing to the right guide of the leading subdivision ; at the second command, he will rectify, as promptly as possible, the direction of the right guides of the column ; the captain of the odd company, if there be one, and the column be by division, will promptly bring the right of his company on the direction, and at company distance from the division next in front ; the left guide of the leading subdivision will place himself on the direction of the right guides, and will be assured in his position by the lieutenant colonel ; which being executed, the colonel will command :

3. *MARCH (or double quick - MARCH).*

409. At this, the right front rank man of each subdivision will face to the right, rest his breast lightly against the left arm of his guide, and the battalion will form itself to the right into line of battle, according to the principles prescribed; which being executed, the colonel will command :

Guides - POSTS.

410. If the column be with the left in front, it will form itself, by inversion, to the left into line, according to the same principles.

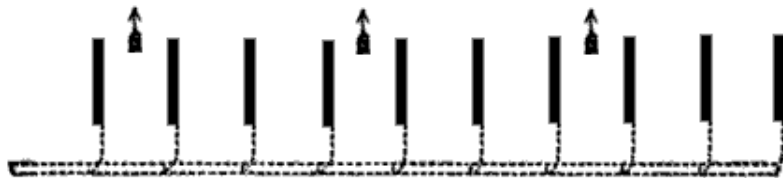
411. If the colonel should wish the battalion, when formed into line of battle, to be moved forward, the movement will be executed by the commands, and according to the principle's indicated in No. 403 ; always preceding the command, *by companies, right (or left) wheel*, by the command, *by inversion*.

**To Break to the Rear, by the Right or Left, into Column,
And to Advance or Retire by the Right or Left of Companies.**

H 87 / C 108, 112, 121 / G 301 / D 43-45 / p. 9 and p. 24 herein

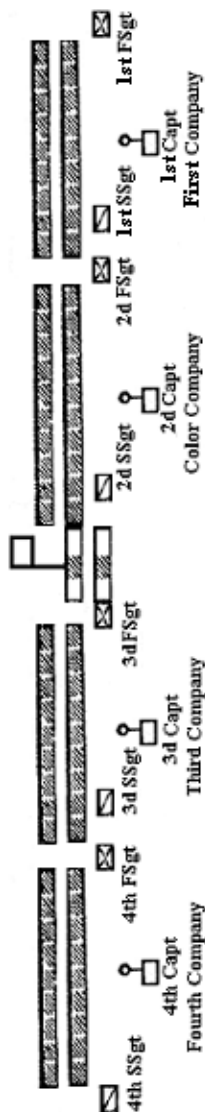
1. *By the right of companies to the rear into column.*
2. *Battalion, right - FACE.*
3. *MARCH (or double quick - MARCH).*

Companies can be broken to the front or rear ; right or left ; into column or remain by the right (left) flank. All these manœuvres can be performed from the halt or during the march.



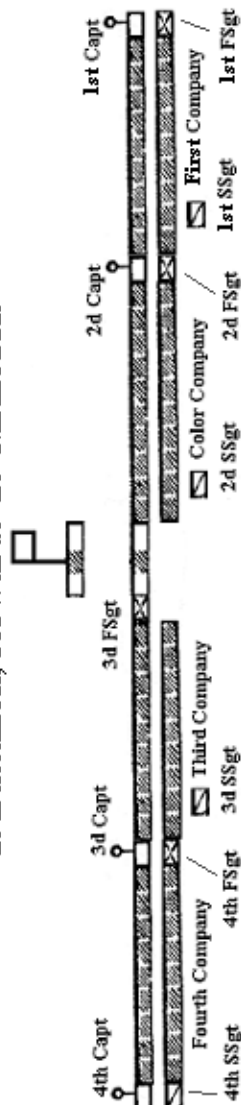
By the right of companies to the front.

1. Fire by [company] [wing] [battalion] [file] [rank] [rank].



Post for captains is four paces behind rear of file closers. FSgts and left most SSgt move to rank of file closers, but remain opposite their prior interval. (See, above illustration.) Front rank of color guard moves to rear rank of battalion. With front cleared and with supervisors in rear, colonel may give next command: "2. Commence firing" if by company or "2. Battalion. 3. READY" by battalion, file or rank.

1. Battalion, forward. 2. MARCH.



Posts for Captains is on the outside of their respective companies. Left most second sergeant posts in the rear rank in a manner similar to first sergeants.

and left guide, and the one or the other charged with the direction.

FLANKS INTO LINE

To Form the Battalion on the Right or Left, By File, into Line of Battle.

H 735 / C 820 / G 354

735. The battalion marching by the right flank when the colonel shall wish to form it on the right by file, he will determine the line of battle, and the lieutenant colonel will place two markers on that line, in conformity with what is prescribed, No. 415.

736. The head of the battalion being nearly up with the first marker, the colonel will command :

1. *On the right, by file, into line.*
2. *MARCH (or double quick - MARCH).*

737. At the command, *march*, the leading company will form itself on the right, by file, into line of battle, as indicated in the school of the company, No. 149; the front rank man of the first file will rest his breast lightly against the right arm of the first marker ; the other companies will follow the movement of the leading company ; each captain will place himself on the line at the same time with the front rank man of his first file, and on the right of this man.

738. The left guide of each company, except the leading one, will place himself on the direction of the markers, and opposite to the left file of his company, at the instant that the front rank man of this file arrives on the line.

739. The formation being ended, the colonel will command :

Guides - POSTS.

740. The colonel will superintend the successive formation of the battalion, moving along the front of the line of battle.

741. The lieutenant colonel will, in succession, assure the direction of the guides, and see that the men of the front rank, in placing themselves on the line, do not pass it.

742. If the battalion march by the left flank, the movement will be executed according to the same principles, and by inverse means.

To Form Forward into Line of Battle from Fours

Vol. 2 Morris (SoB) p. 28 / illustration p. 52

The battalion being in column of fours, right in front, marching or at a halt. The colonel commands :

1. *Forward into line.*
2. *By the right of companies to the front.*
3. *MARCH.*

The leading captain files his company to the right, and halts it when it has marched the length of its front ; he faces it to the front, and dresses it to the right.

Each of the other captains conducts his company by the flank over the shortest line towards the point on the line of battle where his left will rest ; and

to the right ; the chief of each company or division will hasten to its right, and cause files to be broken to the rear, as indicated, No. 89 ; the right guide will break at the same time, and place himself before the front rank man of the first file, to conduct him, and each chief of division will place himself by the side of this guide.

122. The moment divisions face to the right, the junior captain in each will place himself on the left of the covering sergeant of the left company, who will place himself in the front rank. *This rule is general for all the deployments by division.*

123. At the command, *march*, the chief of the first company or division will add, *guide left* ; at this, its left guide will place himself on its left, as soon as the movement of the second company or division may permit, and the file closers will advance one pace upon the rear rank.

124. All the other companies or divisions, each conducted by its chief, will step off together, to take their places in the column ; the second will gain, in wheeling by file to the rear, the space of six paces, which ought to separate its guide from the guide of the first company or division, and so direct its march as to enter the column on a line parallel to this company or division ; the third and fourth companies or divisions will direct themselves diagonally towards, but a little in rear of, the points at which they ought, respectively, to enter the column ; at six paces from the left flank of the column, the head of each of these divisions will incline a little to the left, in order to enter the column as has just been prescribed for the second, taking care also to leave the distance of six paces between its guide and the guide of the preceding company or division. At the moment the companies or divisions put themselves in march to enter the column, the file closers of each will incline to the left, so as to bring themselves to the distance of a pace from the rear rank.

125. Each chief of the companies or divisions will conduct his company division till he shall be up with the guide of the directing one ; the chief will then himself halt, see his company or division file past, and halt it the instant the last file shall have passed, commanding :

1. *Such division* ; 2. HALT ; 3. FRONT. 4. *Left* - DRESS.

126. At the second command, the company or division will halt ; the left guide will place himself promptly on the direction, six paces from the guide which precedes him, in order that, the column being formed, the companies or divisions may be separated the distance of four paces.

127. At the third command, the company or division will face to the front; at the fourth, it will be aligned by its chief, who will place himself two paces outside of his guide, and direct the alignment so that his company or division may be parallel to that which precedes - which being done, he will command,

FRONT,

and place himself before the centre of his company or division.

128. If any company or division, after the command, FRONT, be not at its proper distance, and this can only happen through the negligence of its chief, such company or division will remain in its place, in order that the fault may not be propagated.

step into the front rank, now rear, to re-form the color-file ; the colonel will place himself behind the front rank, become the rear ; the lieutenant colonel and major will place themselves before the rear rank, now leading.

666. The colonel will take post forty paces behind the color-file, in order to assure the lieutenant colonel on the perpendicular, who will place himself at a like distance in front, as prescribed for the advance in line of battle.

667. If the battalion be the one charged with the direction, the colonel will establish markers in the manner indicated, No. 589, except that they face to the battalion, and that the first will be placed twenty-five paces from the lieutenant colonel. If the markers be already established, the officer charged with replacing them in succession will cause them to face about, the moment that the battalion executes this movement, and then the marker nearest to the battalion will hasten to the rear of the two others.

668. These dispositions being made, the colonel will command :

3. *Battalion, forward.*

669. At this command, the color-bearer will advance six paces beyond the rank of file-closers, accompanied by the two corporals of his guard of that rank, the centre corporal stepping back to let the color-bearer pass ; the two file-closers nearest this centre corporal will unite on him behind the color-guard to serve as a basis of alignment for the line of file-closers ; the two general guides will place themselves abreast with the color-rank, the covering sergeants will place themselves in the line of file-closers, and the captains in the rear rank, now leading; the captains in the left wing, now right, will, if not already there, shift to the left of their companies, now become the right.

670. The colonel will then command :

4. MARCH (or *double quick* - MARCH).

671. The battalion will march in retreat on the same principles which govern the advance in line : the centre corporal behind the color-bearer will march exactly in his trace.

672. If it be the directing battalion, the color-bearer will direct himself on the markers, who will, of their own accord, each place himself in succession behind the marker most distant, on being approached by the battalion : the officer charged with the superintendence of the markers, will carefully assure them on the direction.

673. In the case of a subordinate battalion, the color-bearer will maintain himself on the perpendicular by means of points taken on the ground.

674. The colonel, lieutenant colonel, and major will each discharge the same functions as in the advance in line.

675. The lieutenant colonel, placed on the outside of the file closers of the color-company, will also maintain the three file closers of the basis of alignment in a square with the line of direction : the other file closers will keep themselves aligned on this basis.

to form the first division, will stand fast ; the senior captain of the two will place himself before the centre of the division, and command :

Guide right ;

the junior captain will place himself in the interval between the two companies, and the left guide of the left company will place himself in the front rank on the left of the division, as soon as he shall be able to pass.

781. All the other companies, conducted by their captains, will step off with life to arrange themselves in column at company distance, each company behind the preceding one in the column of the same wing, so that, in the right wing, the third may be next behind the fourth, the second next to the third, and so on to the right company and, in the left wing, the sixth may be next behind the fifth, the seventh next to the sixth, and so on to the left company of the battalion.

782. The corresponding companies of the two wings will unite into divisions in arranging themselves in column ; an instant before the union, at the centre of the column, the left guides of right companies will pass into the line of file closers, and each captain will command :

1. *Such company.* 2. *Halt.* 3. FRONT.

783. At the second command, which will be given at the instant of union, each company will halt ; at the third, it will face to the front. The senior captain in each division will place himself on its right, and command,

Right - DRESS,

and the junior captain will place himself in the interval between the two companies. The division being aligned, its chief will command,

FRONT,

and take his position two paces before its centre.

784. The column being thus formed, the divisions will take the respective denominations of *first, second, third, &c.*, according to position in the column, beginning at the front.

785. The lieutenant colonel, who, at the second command given by the colonel, will have placed himself at a little more than company distance in rear of the right guide of the first division, will assure the right guides on the direction as they successively arrive, by placing himself in their rear.

786. The music will pass to the rear of the column.

793. The double column, closed in mass, will be formed according to the same principles and by the same commands, substituting the indication, *closed in mass*, for that of *at half distance*.

795. The double column at company distance will be closed in mass, or, if in mass, will take half distance, by the commands and means indicated for a simple column by division.

Deployment of the Double Column, Faced to the Front.

H 796 / C 946-955 / G 360 / D 132-134 / illustration p. 62

796. The colonel, wishing to deploy the double column, will place a marker respectively before the right and left files of the first division, and a third

To Form Line of Battle While Marching from the Right of Companies to the Rear

Vol. 2 Morris (SoB) p. 50 / illustration p. 47

The colonel commands :

1. *Form line by file left.* 2. MARCH.

Each captain files his company to the left, halts it when it is all on the new direction, faces it to the front, and dresses it to the right.

To Retreat by Alternate Companies.

Modified for companies from Casey, Vol. III / illustration p. 53

[Casey] 688. The retreat by alternate, or odd and even companies, will be executed as follows.

689. The colonel, intending to execute the retreat by alternate companies, will give information of his purpose to the two next officers in rank, who are respectively to command the lines of odd and even companies, and at the same time indicate to the one who is to commence the movement the position in which he will halt his line. The colonel will then command :

1. *Retreat by alternate companies.*

2. *Odd (or even) companies, commence the movement.*

690. These commands having been repeated, the officer entitled to command the line of odd companies, and which line it is supposed ought to commence the movement, will command :

1. *Odd companies, face to the rear.*

691. This having also been repeated, the captains of the designated companies will cause them to face about.

692. The commander of the odd companies will then add :

2. *The (—), the company of direction.*

3. *Companies, forward.* 4. MARCH (or *double quick - MARCH*).

693. At the command, *march*, briskly repeated by the captains of the odd companies, these companies will commence the march, and direct themselves perpendicularly to the rear. The captains of the subordinate companies will maintain them abreast with the directing one in conformity with what is prescribed, No. 454, when the line arrives at the position indicated by the colonel, the commander of this line will command :

1. *Companies.* 2. HALT.

694. At the second command, the line will halt, each captain will immediately face his company about, the commander of the line will rectify the alignment of the directing company, the other companies will be dressed by that, without constraint, however, as to being absolutely on the same general alignment.

695. As soon as the odd companies which form the second line have faced about, the commander of the first line (of even companies) will command :

1. *Face to the rear.*

696. This will be executed as prescribed, No. 691 ; the commander of

367. The right companies, and their captains will stand fast ; but the right and left guides of each of these companies will place themselves respectively before the right and left files of the company, both guides facing to the right, and each resting his right arm gently against the breast of the front rank man of the file, in order to mark the direction.

368. At the command, *march*, the left companies only will put themselves in march, their captains standing fast ; as each shall see that his company, filing past, has nearly cleared the column, he will command :

1. *Such company*. 2. HALT. 3. FRONT.

369. The first command will be given when the company shall yet have four paces to march ; the second at the instant it shall have cleared its right company ; and the third immediately after the second.

[380.] The captains of the left companies will each place himself before the centre of his company. and command,

1. *Such company, forward*. 2. *Guide right*. 3. MARCH.

381. The right guide of each left company will so direct his march as to arrive by the side of the man on the left of the right company. The left company being nearly up with the rear rank of the right company, its captain will halt it, and the movement will be finished as prescribed, No. 371 and following.

371. The left guide will place himself at the same time before one of the three left files of his company, face to the right, and cover correctly the guides of the right company ; the moment his captain sees him established on the direction, he will command :

Right - DRESS.

372. At this, the left company will dress forward on the alignment of the right company ; the front rank man, who may find himself opposite to the left guide, will, without preceding his rank, rest lightly his breast against the right arm of this guide ; the captain of the left company will direct its alignment on this man, and the alignment being assured, he will command,

FRONT ;

but not quit his position.

373. The colonel seeing the divisions formed, will command :

Guides - POSTS.

374. At this, the guides who have marked the fronts of divisions will return to their places, in column, the left guide of each right company passing through the interval in the centre of the division, and the captains will place themselves as prescribed, No. 75.

SoB 75. When the battalion breaks by division, the indication division will be substituted in the commands for that of company ; the chief of each division (the senior captain) will conform himself to what is prescribed for the chief of company, and will place himself two paces before the centre of his division ; the junior captain, if not already there, will place himself in the interval between the two companies in the front rank, and be covered by the covering sergeant of the left company in the rear rank. The right guide of the right company will be the right guide, and the left guide of the left company, the left guide of the

will command :

1. *Column forward*. 2. *Guide left*. 3. MARCH.

The rear rank shorten the step until the distance between it and the front rank is twenty-eight inches ; the men in both ranks carry their arms at will.

If the column should encounter a defile too narrow for the front of a company, the colonel will cause all the companies to break into platoons by his own command, or will give the order to the captain of the first, who will form platoons in his company, and all the others will successively break into platoons, at the same place where the first did : these movements take place before entering the defile.

As soon as the companies are broken, the chiefs of platoons place themselves in the front rank, in place of their guide, who falls back into the rear rank.

If the defile becomes still narrower, the column is broken into sections, successively and at the same place, if the platoons be of at least twelve files. The first sections are commanded by the captain and by the chief of the second platoon; the second by the second lieutenant and orderly sergeant, and, if they be wanting, by the company guides. They all place themselves in the front rank, on the side of direction.

To execute this movement, each chief of platoon causes his platoon to come to *shouldered arms*, and to come to close order ; as soon as the platoon is broken, its chief gives the direction to carry arms at will and to increase the distance between the ranks.

When the colonel wishes to close the ranks, he will command :

1. *Right shoulder shift*. 2. ARMS.

The rear rank will come at once to close order.

If the platoons be less than twelve files, files should be broken to the rear, until the front is reduced to seven files, not including the chief of platoon ; and if it be necessary still further to reduce the front, the men would be brought to *right shoulder shift arms*, would take the quick (or double-quick) step successively and at the command of the chiefs of platoons, so that the rear-rank men, as well as the files broken to the rear, should close to fifteen inches, after which the platoons might be reduced to a front of five files, not including the chief.

If, finally, the defile is only wide enough to give passage to six men abreast, the movement is made by bringing the arms to the shoulder, and marching by the flank.

In proportion as the defile widens, column is formed by platoon, or by section, and the men are again permitted to carry their arms at will.

The ground becoming still wider, companies are formed.

The first subdivision follows all the windings of the defile ; the others march upon its traces, without concerning themselves about the direction.

The soldiers must not seek to avoid the bad parts of the road ; they are to march, as far as practicable, directly before them.

The changes of direction are executed at the order of the chief of each subdivision, without other commands.

following.

759. The colonel will cause the battalion to change front forward on the eighth company according to the same principles and by inverse means.

Change of Front Perpendicularly to the Rear.

H 760 / C 852 / G 357 / D 112 / illustration p. 58

760. The colonel, wishing to change front to the rear on the right company, will impart his purpose to the captain of this company. The latter will immediately face his company about, wheel it to the left on the fixed pivot, and halt it when it shall be in the direction indicated to him by the colonel ; the captain will then face his company to the front, and align it by the right against the two markers, whom the colonel will cause to be established before the right and left files.

761. These dispositions being made, the colonel will command :

1. *Change front to the rear, on first company.* 2. *Battalion, about - FACE.*
3. *By company, left half wheel.* 4. *MARCH (or double quick - MARCH).*

762. At the second command, all the companies, except the right, will face about.

763. At the third, the captains, whose companies have faced about, will each place himself behind the centre of his company, two paces from the front rank, now the rear.

764. At the fourth, these companies will wheel to the left on the fixed pivot by the rear rank ; the left guide of each will, as soon as he is able to pass, place himself on the left of the rear rank of his company, now become the right; and when the colonel shall judge that the companies have sufficiently wheeled, he will command :

5. *Forward.* 6. *MARCH.* 7. *Guide left.*

765. At the sixth command, the companies will cease to wheel, march straight forward towards the new line of battle, and, at the seventh, take the touch of the elbow towards the left.

766. The guide of each company on its right flank, become left, will conform himself to the principles prescribed, No. 748, p. 35 *herein*.

767. The second company, from the right, having arrived opposite to the left of the first, will turn to the left ; the guide will so direct himself as to arrive parallel with the line of battle, cross that line, and when the front rank, now in the rear, shall be three paces beyond it, the captain will command :

1. *Second company.* 2. *HALT.*

768. At the second command, the company will halt ; the files which may not yet be in line with the guide, will promptly come into it ; the captain will cause the company to face about, and then align it by the right.

769. All the other companies will execute what has just been prescribed for the second, each as it successively arrives opposite to the left of the company that precedes it on the new line of battle.

770. The formation being ended, the colonel will command :

their proper wheeling distance.

332. If the column be marching in *double quick time*, the leading company will continue to march at the same gait. The captains of the other companies will cause *quick time* to be taken, and as each company gains its proper distance, its captain will cause it to retake the *double quick step*.

To Close the Column to Half Distance, or in Mass.

H 252 / C 294 / G 309 / D 52 / illustration p. 56

252. A column by company being at full distance right in front, and at a halt, when the colonel shall wish to cause it to close to half distance, on the leading company, he will command :

1. *To half distance, close column.* 2. *MARCH (or double quick - MARCH).*

253. At the first command, the captain of the leading company will caution it to stand fast.

254. At the command, *march*, which will be repeated by all the captains, except the captain of the leading company, this company will stand fast, and its chief will align it by the left ; the file closers will close one pace upon the rear rank.

255. All the other companies will continue to march, and as each in succession arrives at platoon distance from the one which precedes, its captain will halt it.

256. At the instant that each company halts, its guide will place himself on the direction of the guides who precede, and the captain will align the company by the left ; the file closers will close one pace upon the rear rank.

257. No particular attention need be given to the general direction of the guides before they respectively halt ; it will suffice if each follow in the trace of the one who precedes him.

258. The colonel, on the side of the guides, will superintend the execution of the movement, observing that the captains halt their companies exactly at platoon distance the one from the other.

259. The lieutenant colonel, a few paces in front, will face to the leading guide and assure the positions of the following guides as they successively place themselves on the direction.

260. The major will follow the movement abreast with the last guide.

261. If the column be in march, the colonel will cause it to close by the same commands.

262. If the column be marching in double quick time, at the first command, the captain of the leading company will command, *quick time* ; the chiefs of the other companies will caution them to continue their march.

263. At the command, *march*, the leading company will march in quick time, and the other companies in double quick time and as each arrives at platoon distance from the preceding one, its chief will cause it to march in quick time.

264. When the rearmost company shall have gained its distance, the colonel will command :

641. This disposition being made, the colonel will command :

1. *Guides* - ON THE LINE.

642. At this command, the right guide of each company in the right wing, and the left guide of each company in the left, will each place himself on the direction of the color-bearer and the two general guides, face to the color-bearer, place himself in rear of the guide who is next before him at a distance equal to the front of his company, and align himself upon the color-bearer and the general guide beyond.

643. The captains in the right wing will shift to the left of their companies, except the captain of the color-company, who will remain on its right, but step into the rear rank ; the captains in the left wing will shift to the right of their companies.

644. The lieutenant-colonel will promptly rectify, if necessary, the positions of the guides of the right wing, and the major those of the other ; which being executed, the colonel will command :

2. *On the centre* - DRESS.

645. At this command, the companies will move up in quick time against the guides, where, having arrived, each captain will align his company according to prescribed principles, the lieutenant-colonel aligning the color-company.

646. If the alignment be oblique, the captains will take care to conform their companies to it in conducting them towards the line.

647. The battalion being aligned, the colonel will command :

3. *Color and guides* - POSTS.

648. At this command, the color-bearer, the general and company guides, and the captains in the right wing, will take their places in the line of battle, and the color-bearer will replace the heel of the color-lance against the right hip.

Change of Front Perpendicularly Forward.

H 743 / C 830 / G 355 / D 109 / illustration p. 57

743. The battalion being in line of battle, it is supposed to be the wish of the colonel to cause a change of front forward on the right company, and that the angle formed by the old and new positions be a right angle, or a few degrees more or less than one ; he will cause two markers to be placed on the new direction, before the position to be occupied by that company, and order its captain to establish it against the markers.

744. The captain of the right company will immediately direct it upon the markers by a wheel to the right on the fixed pivot ; and after having halted it, he will align it by the right.

745. These dispositions being made, the colonel will command :

1. *Change front forward on first company.* 2. *By company right half wheel.*

3. MARCH (or *double quick* - MARCH).

746. At the second command, each captain will place himself before the centre of his company.

747. At the third, each company will wheel to the right on the fixed pivot;

the right, opposite to the captain of the right company, the other opposite to the sergeant who closes the left of the battalion.

593. The captains of the left wing will shift, passing before the front rank, to the left of their respective companies ; the sergeant on the left of the battalion will step back into the rear rank. The covering sergeant of the company next on the left of the color-company, will step into the front rank.

594. The lieutenant colonel having assured the color-bearer on the line between himself and the corporal of the color-file, now in the front rank, will go to the position which will be hereinafter indicated, No. 602.

595. The major will place himself six or eight paces on either flank of the color-rank.

596. The colonel will then command :

2. MARCH (or *double quick* - MARCH).

597. At this command, the battalion will step off with life ; the color-bearer, charged with the step and direction, will scrupulously observe the length and cadence of the pace, marching on the prolongation of the two points previously taken, and successively taking others in advance by the means indicated in the school of the company ; the corporal on his right, and the one on his left, will march in the same step, taking care not to turn the head or shoulders, the color-bearer supporting the color-lance against the hip.

598. The two general guides will march in the same step with the color-rank, each maintaining himself abreast, or nearly so, with that rank, and neither occupying himself with the movement of the other.

599. The three corporals of the color-guard, now in the front rank of the battalion, will march well aligned, elbow to elbow, heads direct to the front, and without deranging the line of their shoulders ; the centre one will follow exactly in the trace of the color-bearer, and maintaining the same step, without lengthening or shortening it, except on an intimation from the colonel or lieutenant colonel, although he should find himself more or less than six paces from the color-rank.

600. The covering sergeant in the front rank between the color-company and the next on the left, will march elbow to elbow, and on the same line, with the three corporals in the centre, his head well to the front.

601. The captains of the color-company, and the company next to the left, will constitute, with the three corporals in the centre of the front rank, the basis of alignment for both wings of the battalion ; they will march in the same step with the color-bearer, and exert themselves to maintain their shoulders exactly in the square with the direction. To this end, they will keep their heads direct to the front, only occasionally casting an eye on the three centre corporals, with the slightest possible turn of the neck, and if they perceive themselves in advance, or in rear of these corporals, the captain, or two captains, will almost insensibly shorten or lengthen the step, so as, at the end of several paces, to regain the true alignment, without giving sudden checks or impulses to the wings beyond them respectively.

602. The lieutenant colonel, placed twelve or fifteen paces on the right of the captain of the color-company, will maintain this captain and the next one